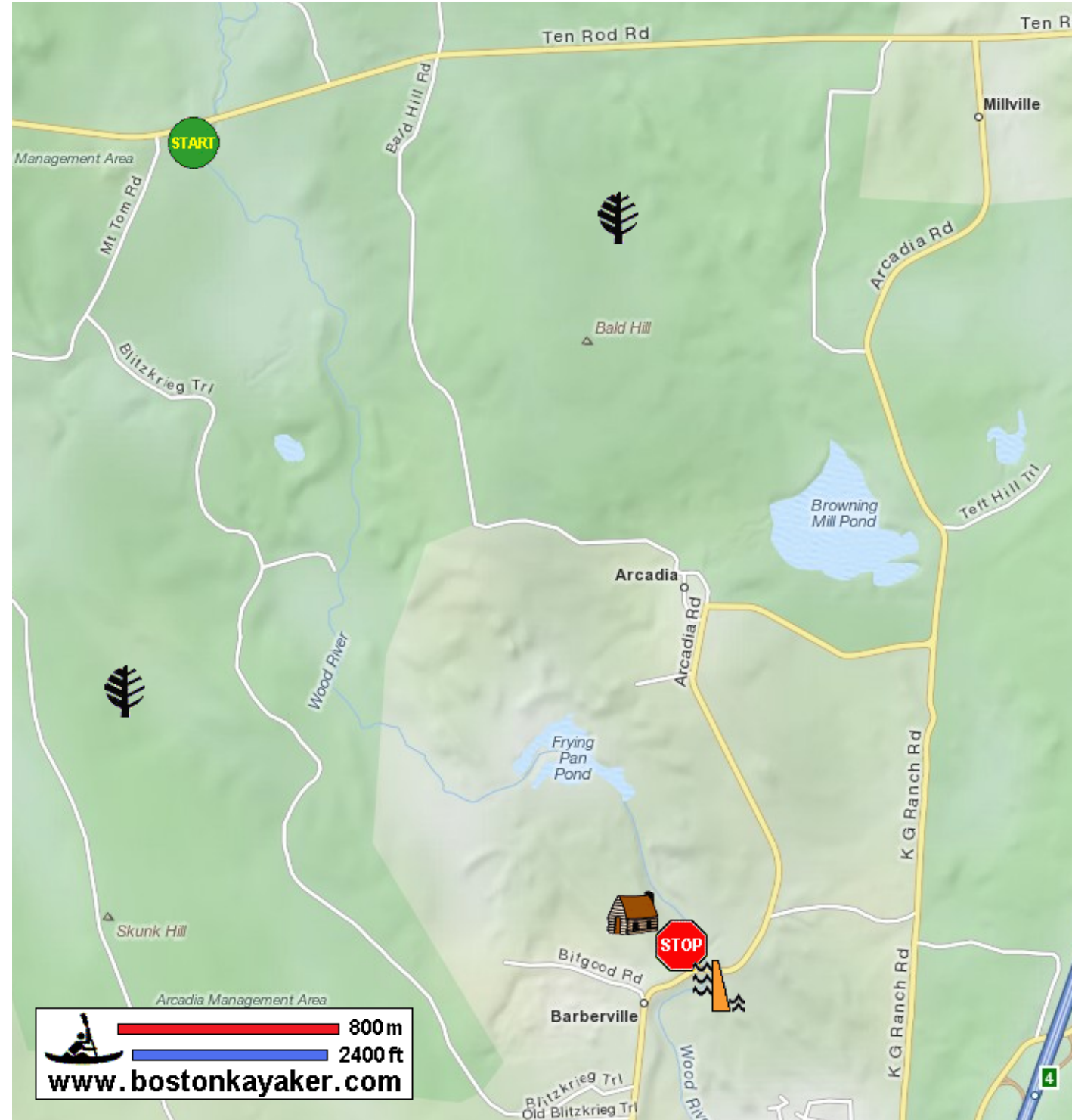
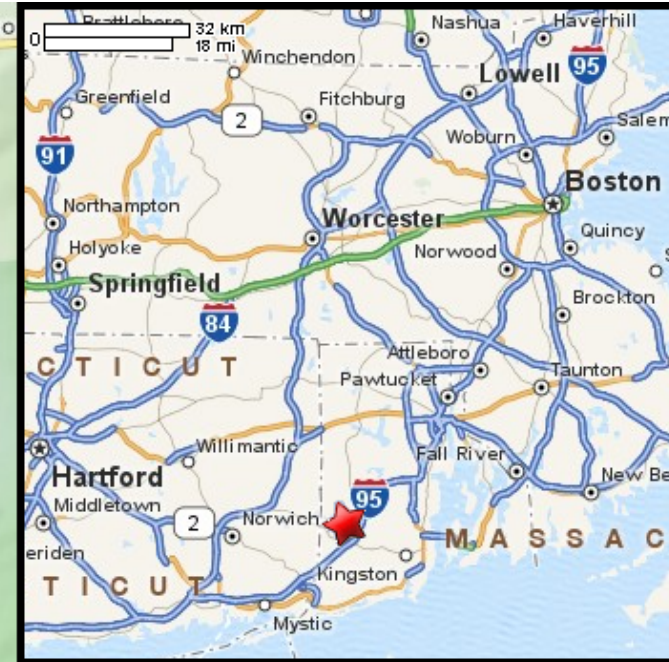








Kayaking on Wood River - from Arcadia RI to Richmond RI




 800m
 2400ft
www.bostonkayaker.com

-  Put in at Route 165 in Arcadia RI.
-  Take out at Arcadia Road in Richmond RI.
-  Estimated distance = 4 miles
-  Barberville Dam
-  Arcadia Wildlife Management Area
-  Wood-Pawcatuck Watershed Association Office