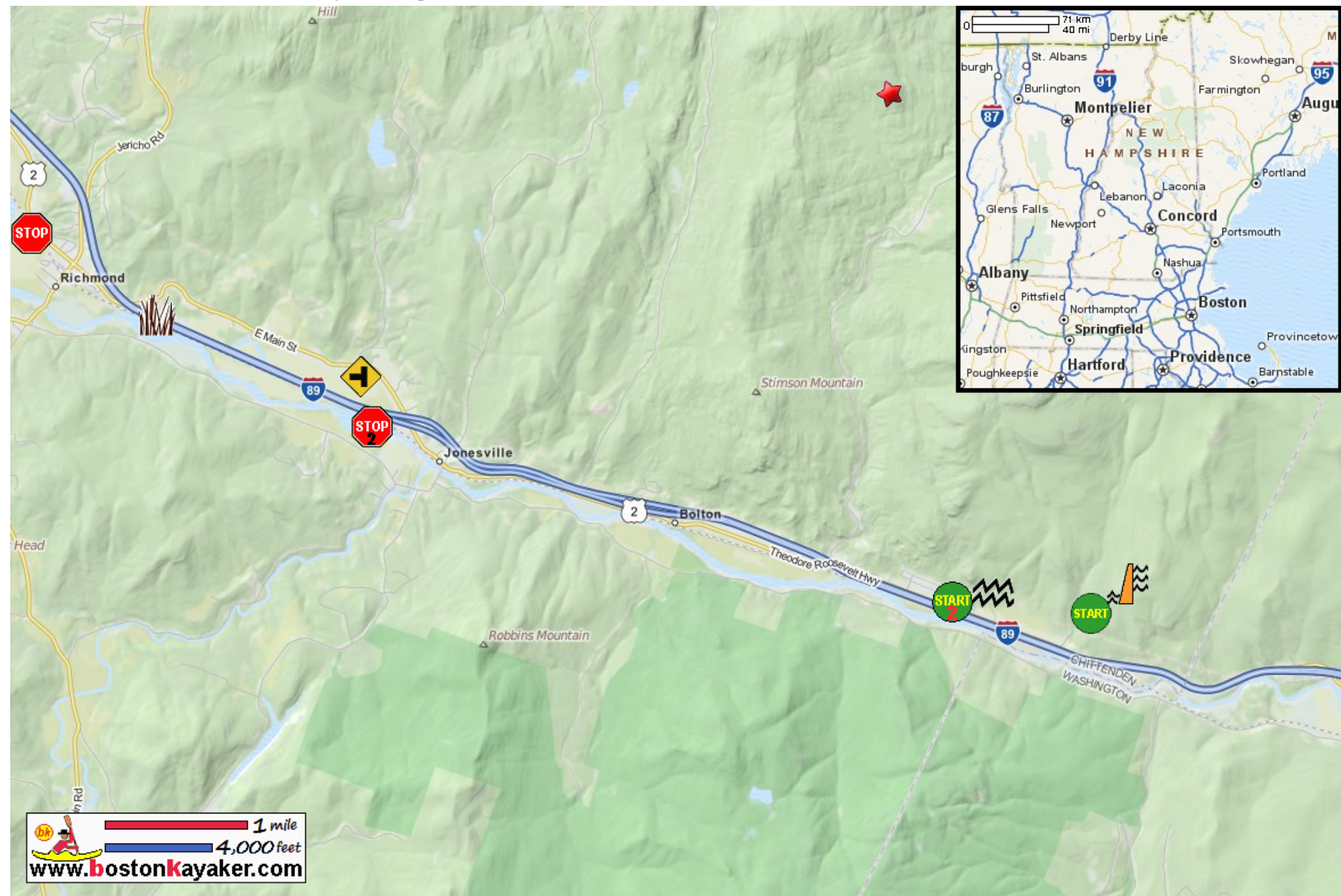


Kayaking on Winooski River - from Waterbury VT to Richmond VT



Put in below dam at Power Plant Road in Waterbury VT.



Take out at Bridge Street in Richmond VT.



Estimated distance = 10.5 miles



Class II Rapids. Scout from left shore and portage if necessary.



Alternate put in at River Road.



Alternate take out at Cochran Road Bridge.



Huntington River enters on river left.



Richmond Floodplain Preserve



River name came from Abenaki word meaning "wild onion".



Bolton Dam