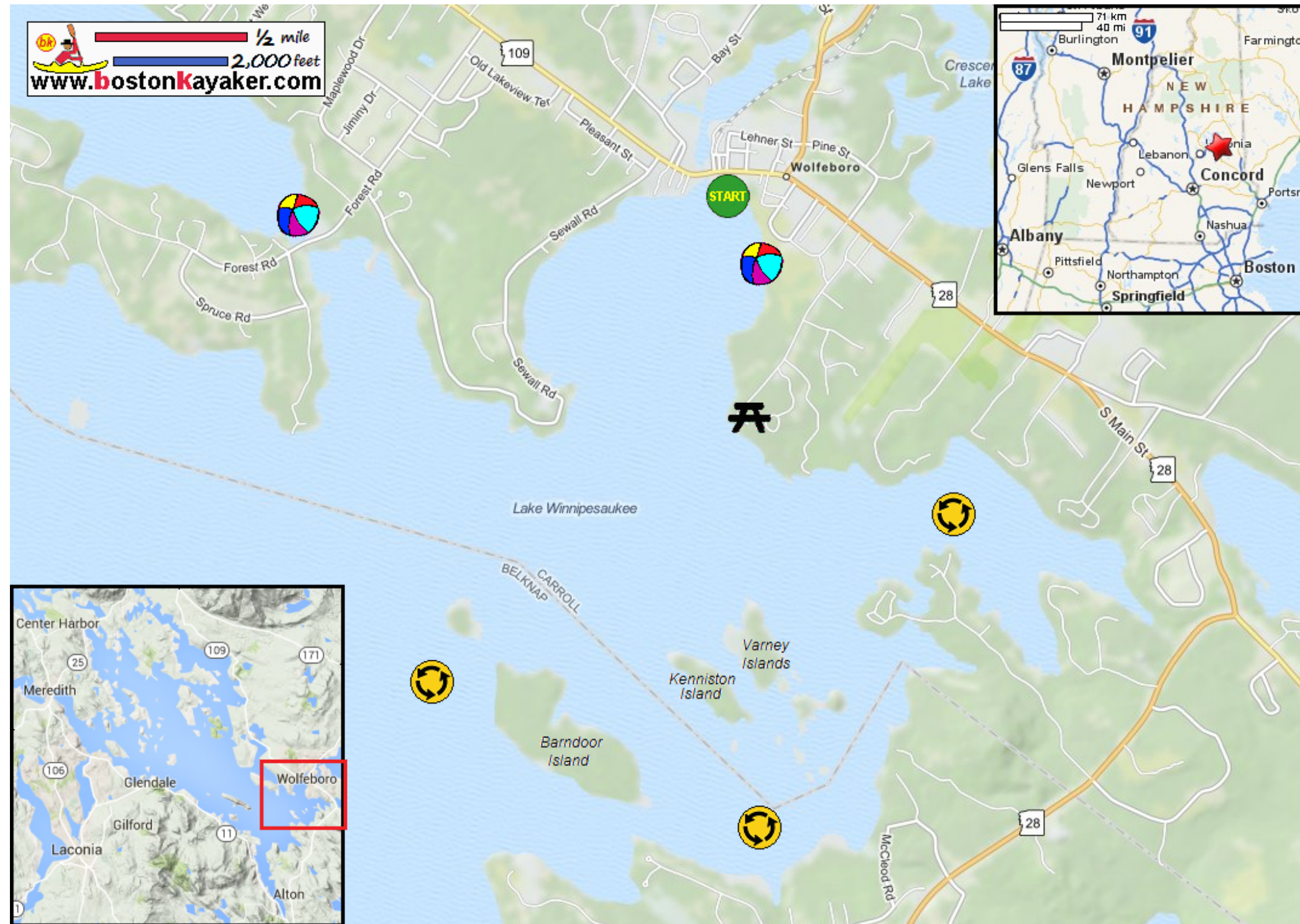


# Kayaking on Lake Winnepesaukee's Wolfeboro Bay - in Wolfeboro NH

— 1/2 mile  
— 2,000 feet  
[www.bostonkayaker.com](http://www.bostonkayaker.com)



- START** Put in at South Main Street / Route 109 in Wolfeboro NH.
- Paddle around Wolfeboro Bay and return.
- Estimated round trip distance = 6+ miles
- Public beaches
- McKinney Park
- Islands' shores are private property.