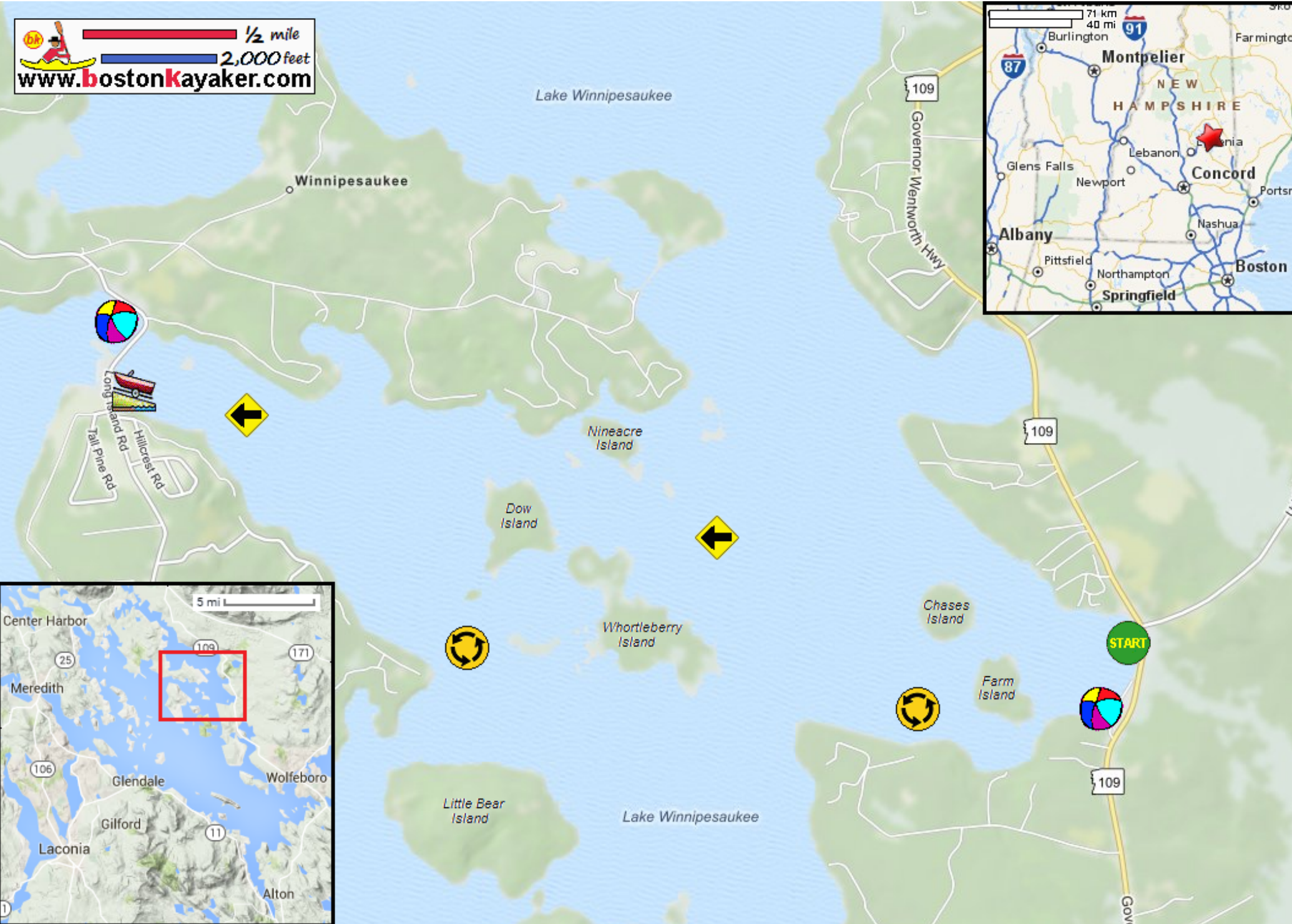


Kayaking on Lake Winnepesaukee's Nineteenmile Bay - in Mirror Lake NH

1/2 mile
 2,000 feet
www.bostonkayaker.com



- Put in at Union Wharf on Route 109 in Mirror Lake NH.
- Paddle east to Long Island beach.
- Paddle back around islands and return.
- Estimated round trip distance = 6.5+ miles
- Public beaches
- Long Island Beach Ramp