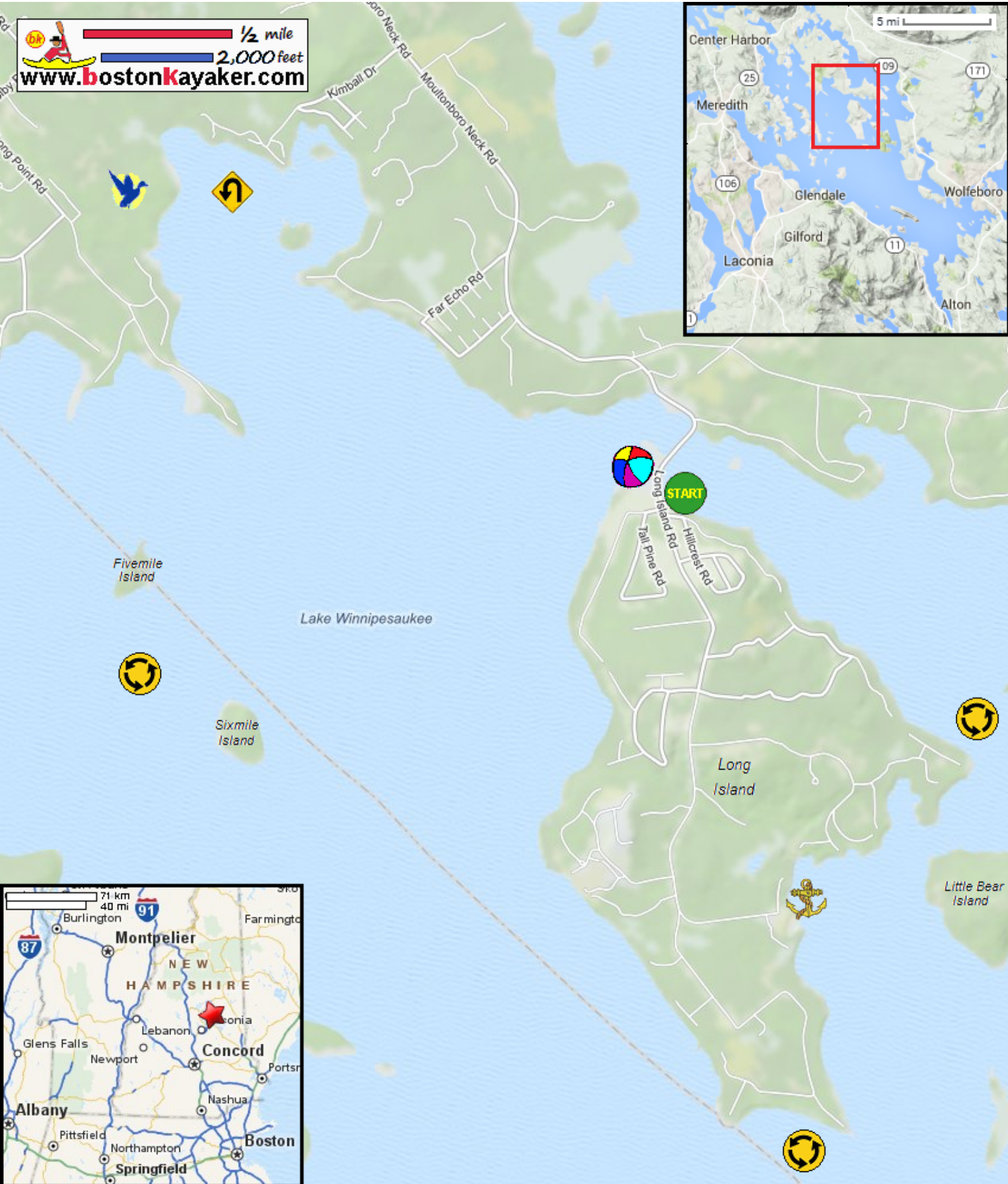










Kayaking on Lake Winnepesaukee around Long Island - in Moltonboro NH


 1/2 mile
 2,000 feet
www.bostonkayaker.com



-  Put in at Long Island Road in Moltonboro NH.
-  Paddle around Long Island and the smaller islands.
-  Paddle to Braun Bay and return.
-  Estimated round trip distance = 10+ miles
-  Harrilla Landing - alternate put in
-  Long Island Town Beach - resident sticker required
-  Kona Wildlife Area
-  Islands' shores are private property.