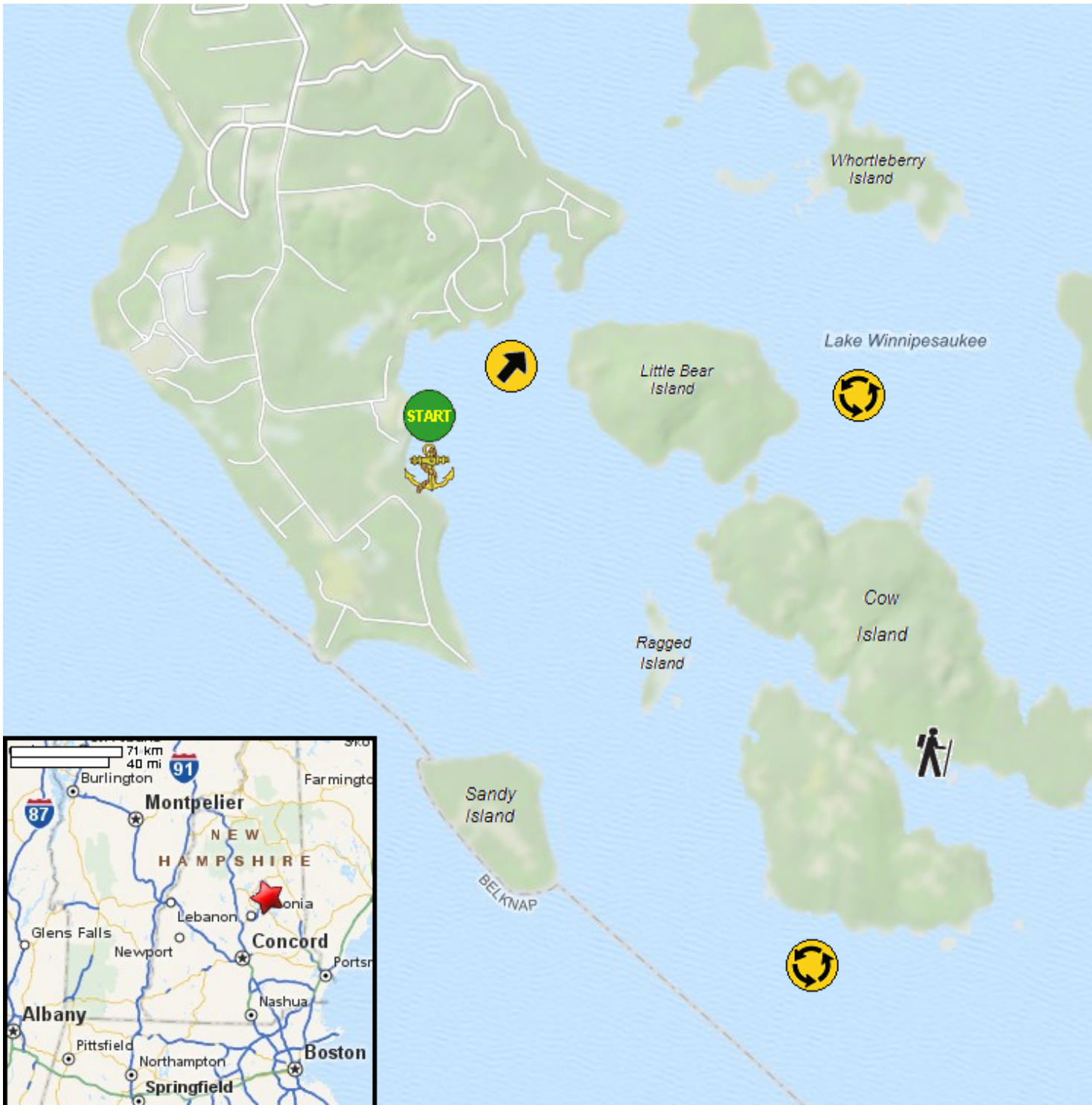








Kayaking on Lake Winnepesaukee around Cow Island - in Moltonborough NH




 1/2 mile
 2,000 feet
www.bostonkayaker.com

-  Put in at Long Island Road state ramp in Moltonborough NH.
-  Paddle north east from launch.
-  Paddle around Cow Island and return.
-  Estimated round trip distance = 8+ miles
-  Harilla Landing Yatch Club
-  Can land and hike on Cow Island.