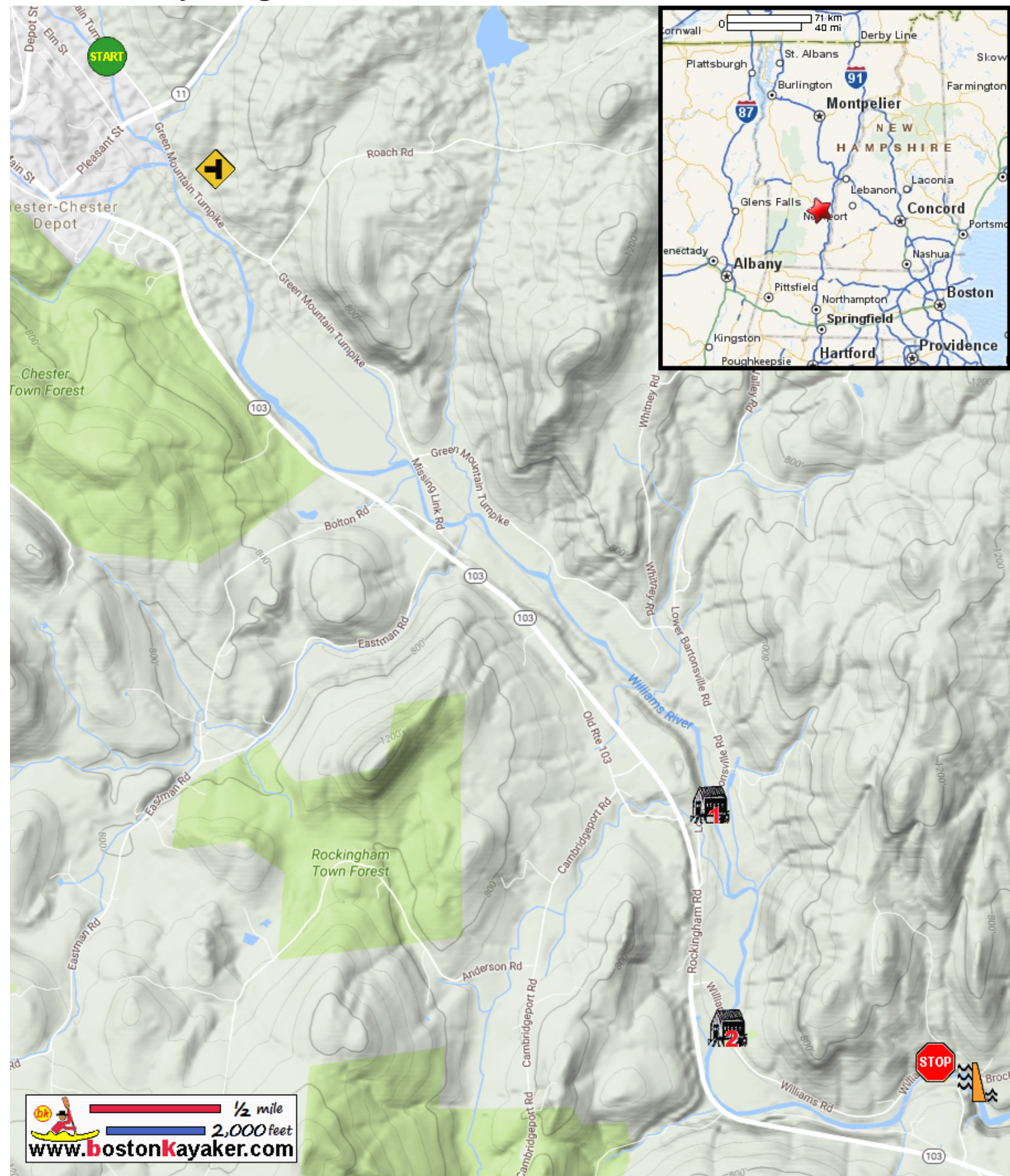









# Kayaking on Williams River - from Chester VT to Bellows Falls VT





  
 1/2 mile  
 2,000 feet  
[www.bostonkayaker.com](http://www.bostonkayaker.com)

-  Put in at Green Mountain Turnpike in Chester VT.
-  Take out at Williams Road in Bellows Falls VT.
-  Williams River Middle Branch enters from the west.
-  Bartonville Covered Bridge
-  Estimated distance = 6.5 miles
-  Brockways Mills Dam
-  Worralls Covered Bridge