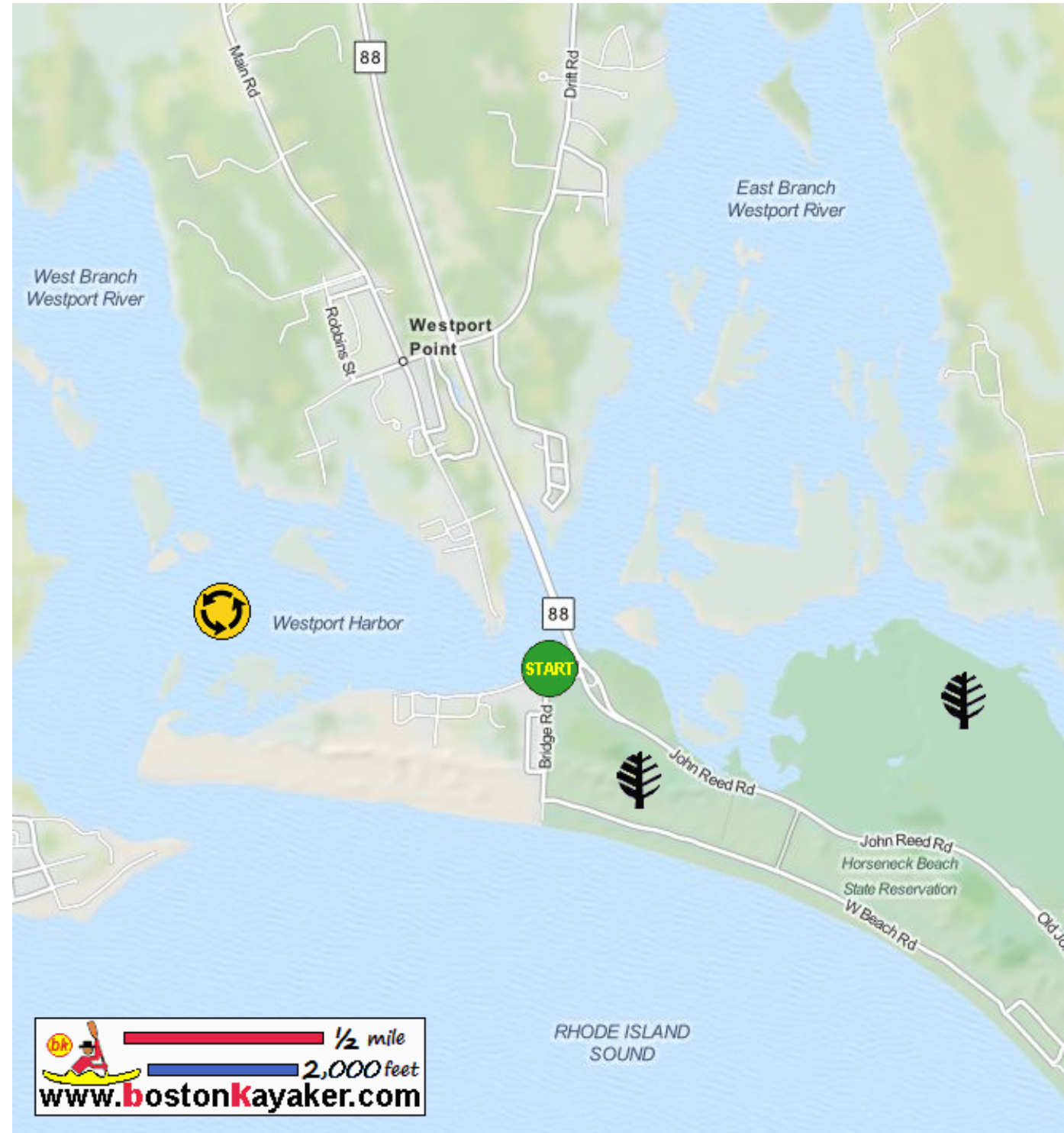


# Kayaking on Westport Harbor and The Let - in Westport MA





  
[www.bostonkayaker.com](http://www.bostonkayaker.com)

-  Put in at Route 88 in Westport MA.
-  Paddle into The Let and return.
-  Paddle around Westport Harbor and return.
-  Estimated round trip distance = 6+ miles
-  Horseneck Beach State Reservation
-  Best to start trip 1 hour before high tide.