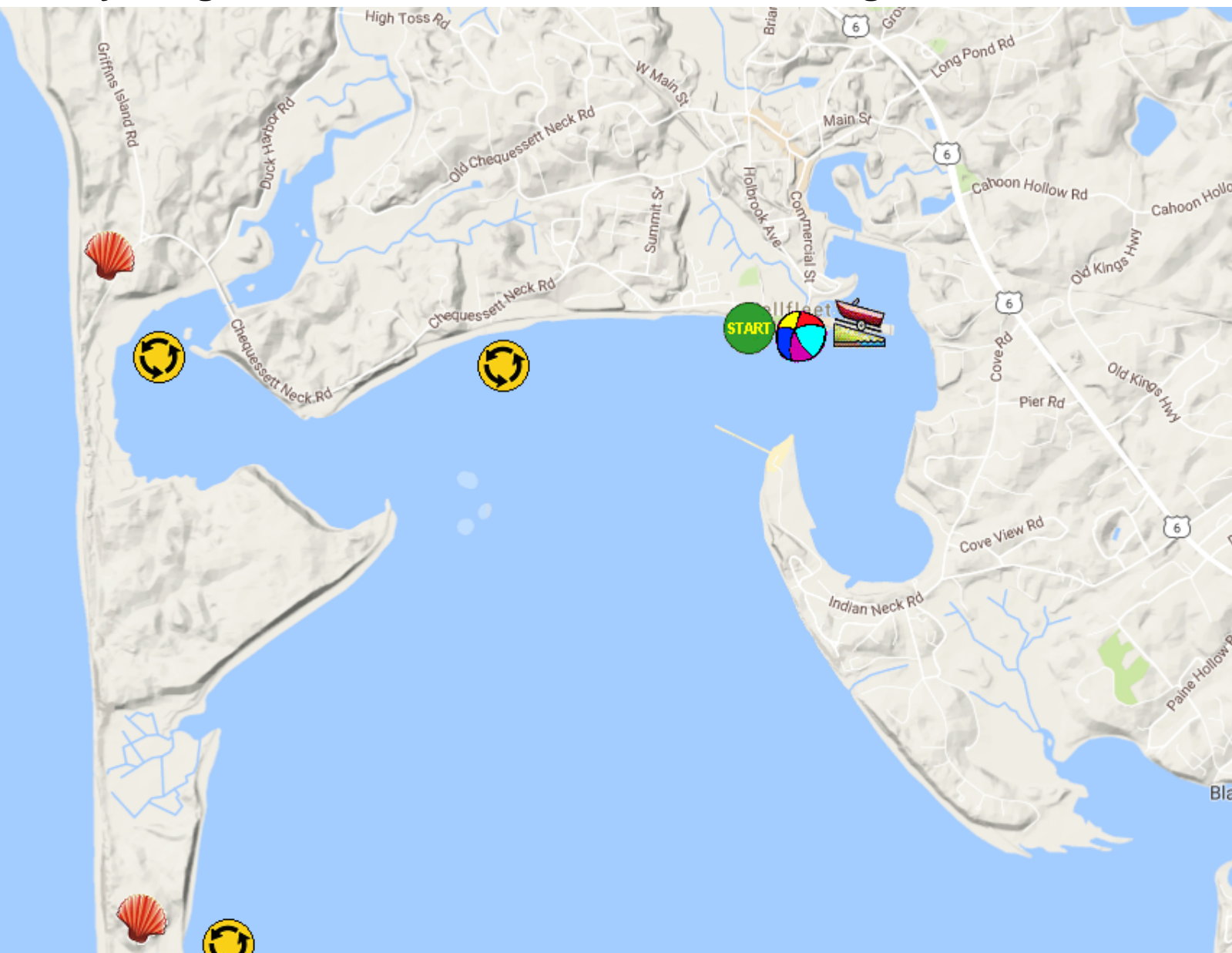









# Kayaking on Wellfleet Harbor West and Herring River - in Wellfleet MA




 1/2 mile  
 2,000 feet  
[www.bostonkayaker.com](http://www.bostonkayaker.com)

-  Put in at Kendrick Avenue beach in Wellfleet MA.
-  Paddle around west Wellfleet Harbor and Herring River and return.
-  Estimated distance = 6.5+ miles
-  Wellfleet Town Pier
-  Best to start paddle 1 hour+ before high tide.
-  Cape Cod National Seashore
-  Mayo Beach - parking available