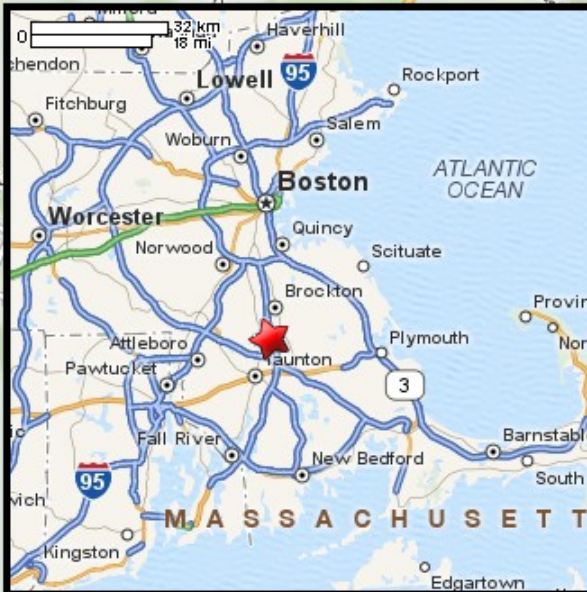
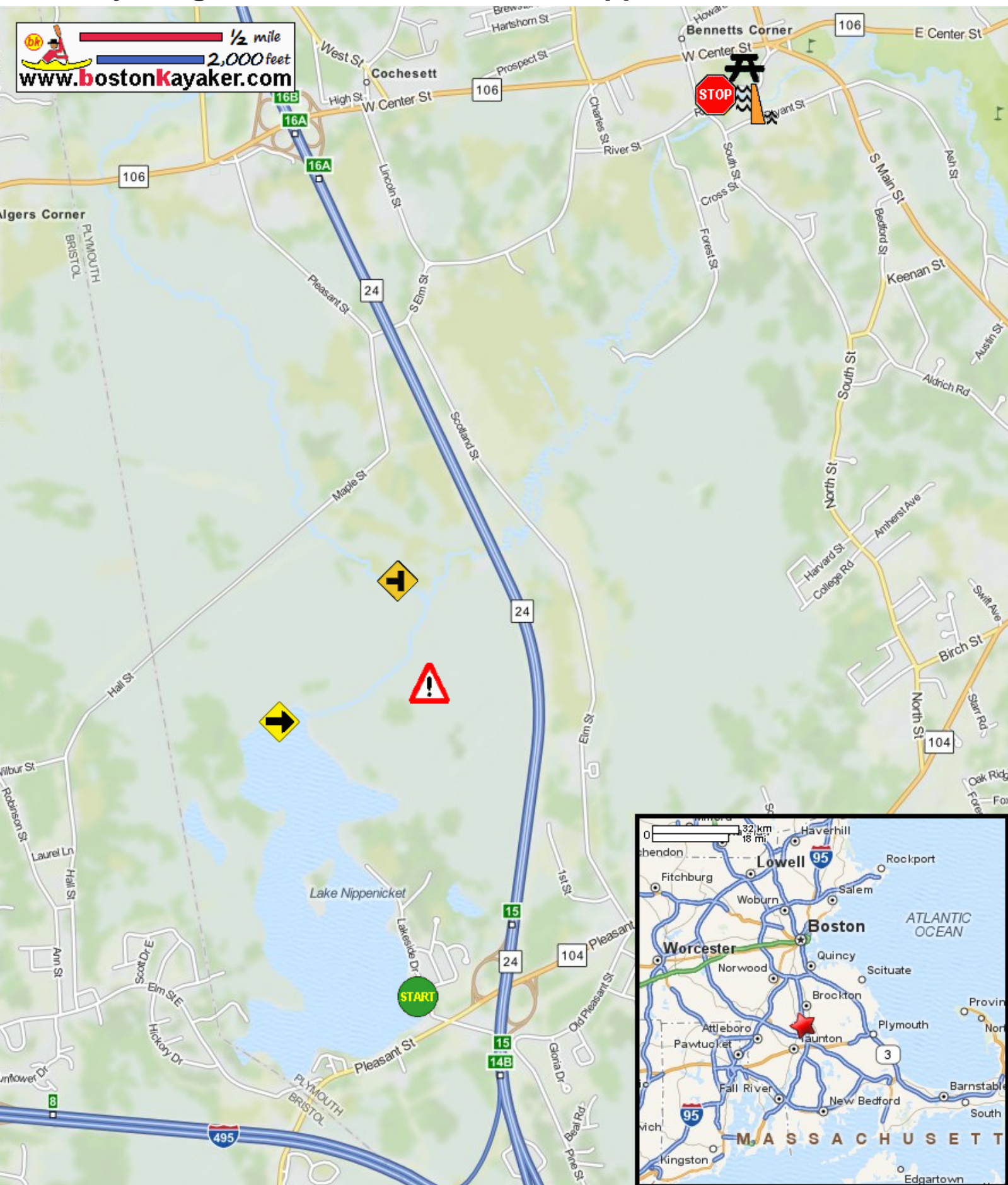






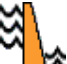



Kayaking on Town River and Lake Nippenicket - in Bridgewater MA

  1/2 mile
 2,000 feet
www.bostonkayaker.com



-  Put in at Lakeside Drive in Bridgewater MA.
-  Paddle north to the outlet and headwaters of Town River.
-  Hobomock River enters on river left. Stay right.
-  Take out at River Street in West Bridgewater MA.
-  Estimated distance = 5.5 miles
-  Can be thick with brushes and impassable in the summer.
-  War Memorial Park Dam
-  War Memorial Park