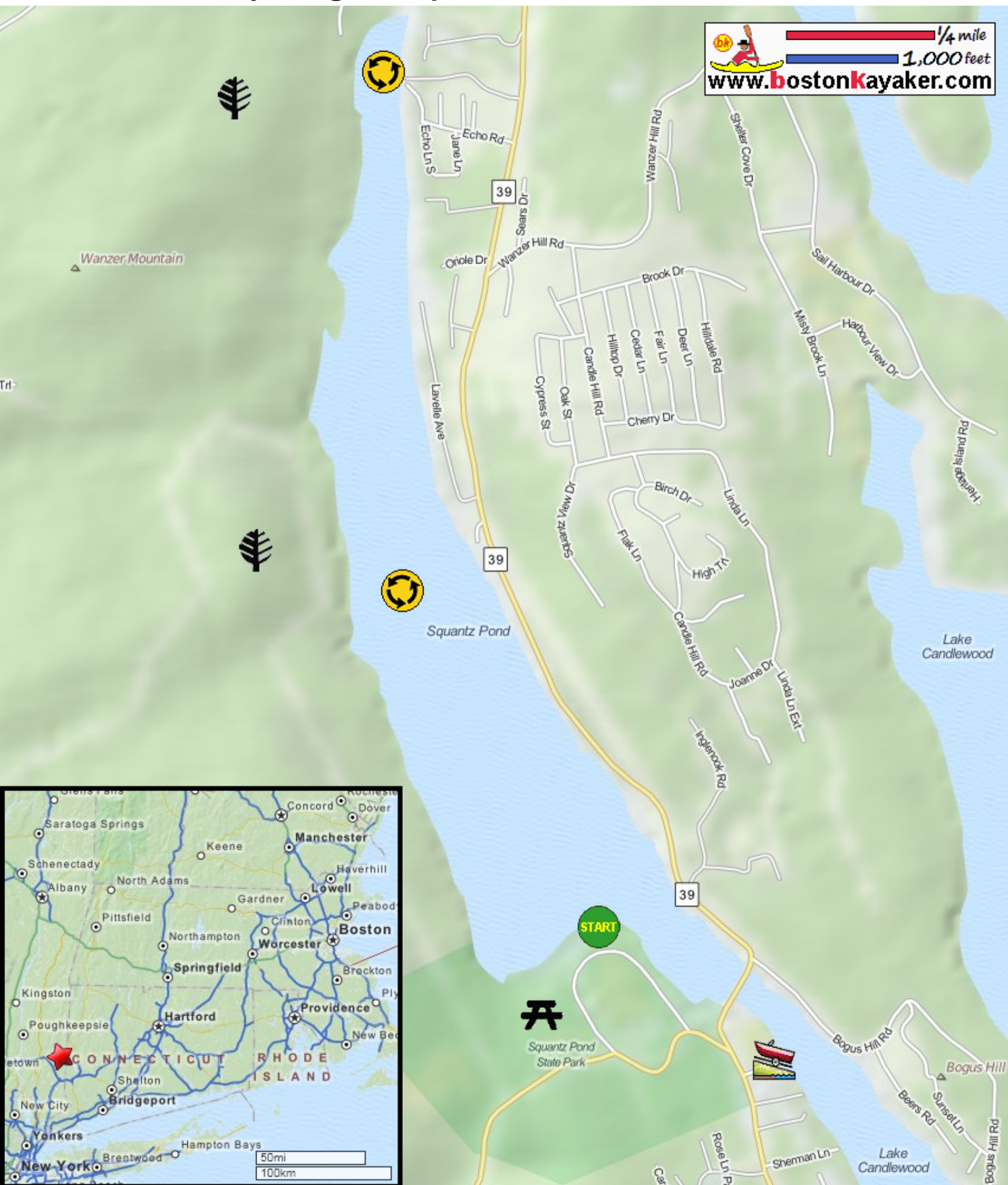








Kayaking on Squantz Pond - in New Fairfield CT

1/4 mile
1,000 feet
www.bostonkayaker.com



-  Put in at state park beach on Short Woods Road in New Fairfield CT.
-  Paddle around Squantz Pond and return.
-  Estimated round trip distance = 5 miles
-  Squantz Pond State Park
-  Lake Candlewood boat ramp
-  Pootatuck State Forest