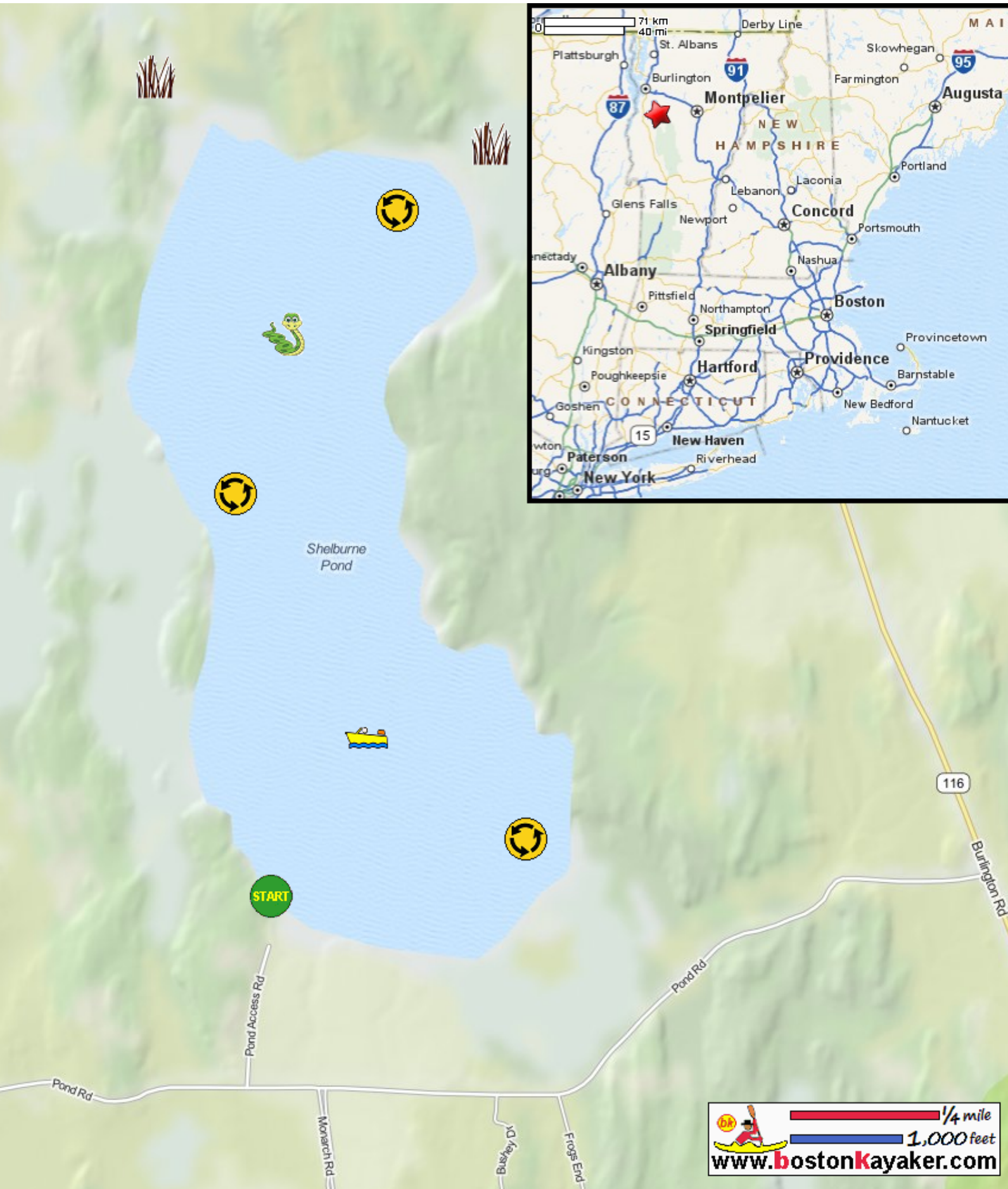









# Kayaking on Shelburne Pond - in Shelburne VT




 1/4 mile  
 1,000 feet  
[www.bostonkayaker.com](http://www.bostonkayaker.com)

-  Put in at Pond Access Road in Shelburne VT.
-  Paddle around Shelburne Pond and return.
-  Estimated round trip distance = 3.5+ miles
-  Fast boats and jetskis allowed here.
-  Pond surrounded by cliffs and limestone ledges.
-  Watch out for harmless water snakes on pond!
-  Can explore marshy inlets at north end.