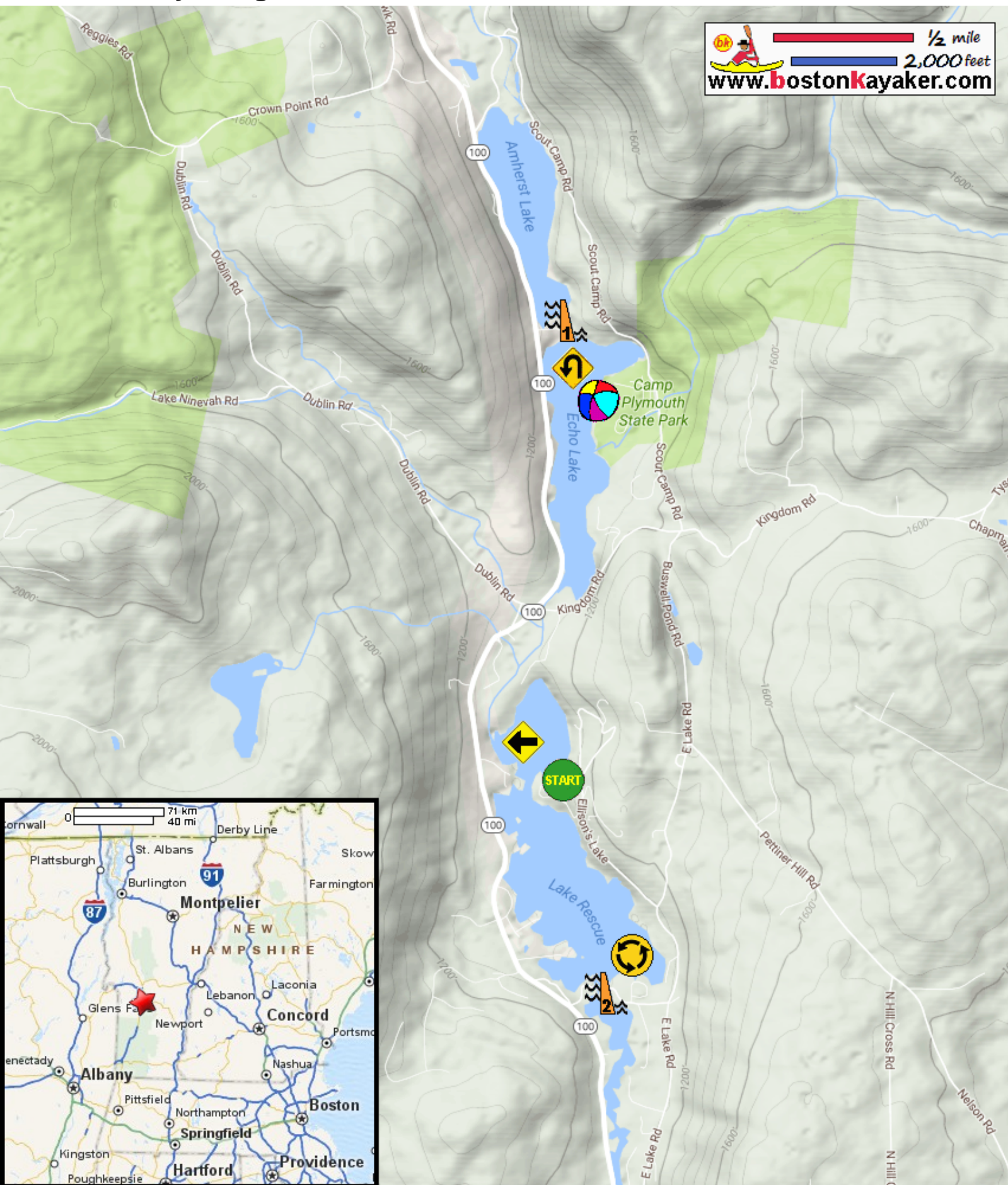


Kayaking on Lake Rescue and Echo Lake - in Ludlow VT

1/2 mile
2,000 feet
www.bostonkayaker.com



- Put in at Fishing Access Road in Ludlow VT.
- Paddle west and into Black River.
- Continue upriver to Echo Lake and return.
- Paddle around Lake Rescue and return.
- Amherst Lake Dam
- Lake Rescue Dam
- Camp Plymouth State Park and beach.
- Estimated round trip distance = 5+ miles