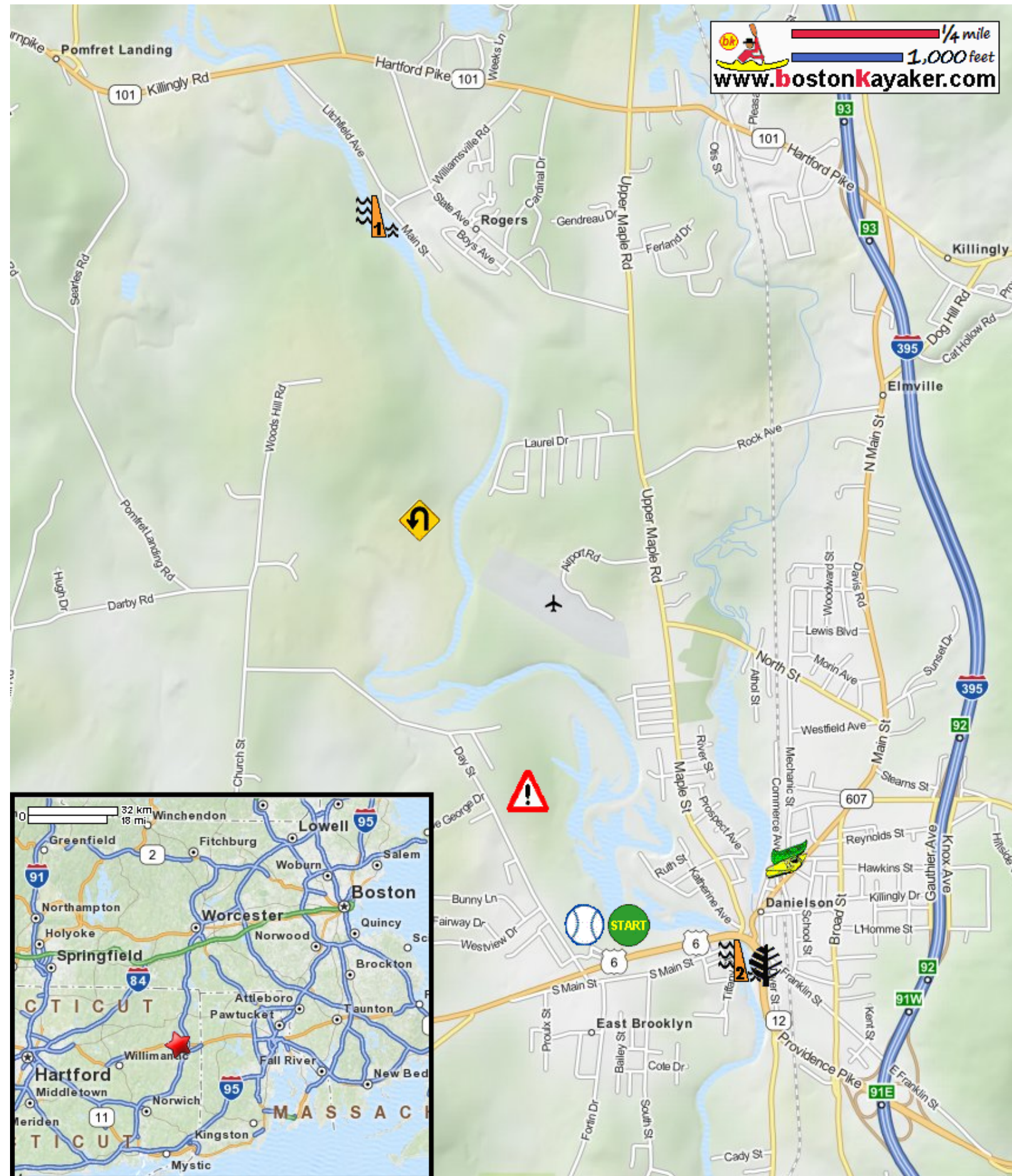











# Kayaking on Quinebaug River - in Brooklyn CT

www.bostonkayaker.com



-  Put in at park on Day Street in Brooklyn CT.
-  Paddle upstream until current allows and return.
-  Estimated round trip distance = 6+ miles
-  Rogers Dam
-  Killingly Dam
-  Tricky to find main branch of river. Stay left upstream.
-  Quinebaug River Trail esplanade
-  Five Mile Outfitters kayak rentals
-  Riverside Park athletic fields