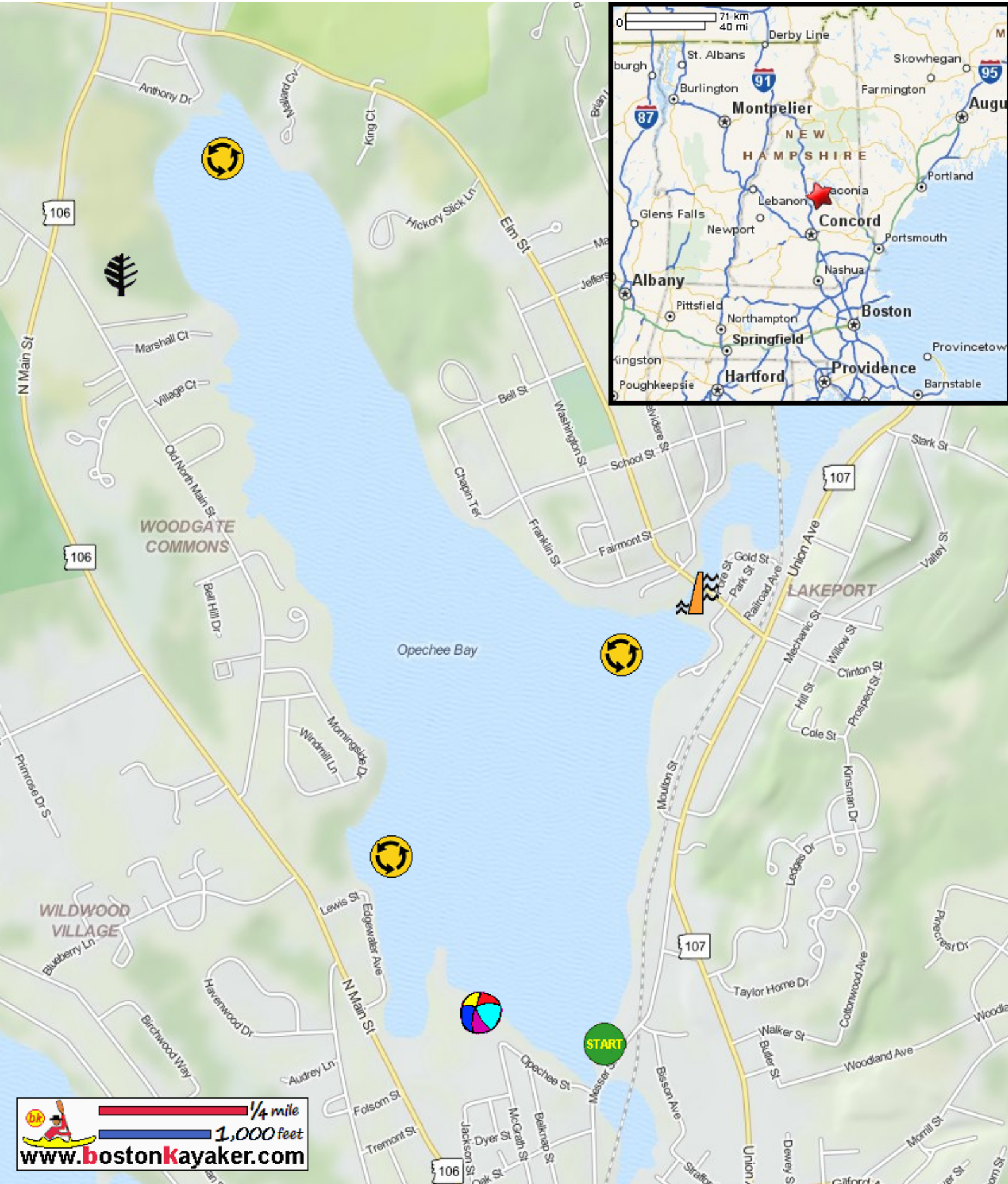
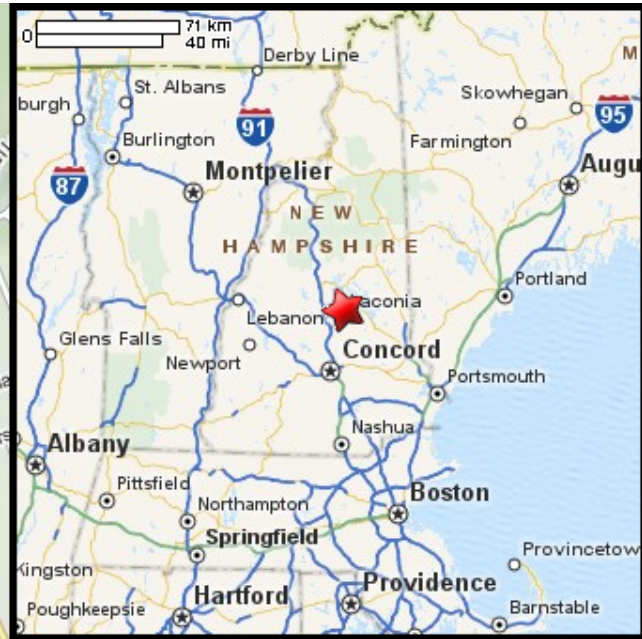








# Kayaking on Opechee Bay - in Laconia NH



-  Put in at town ramp on Messer Street in Laconia NH.
-  Paddle around Opechee Bay and return.
-  Estimated round trip distance = 3.5 miles
-  Lakeport Dam
-  Opechee Park and beach - alternate put in spot
-  Opechee Bay State Forest

  1/4 mile  
 1,000 feet  
[www.bostonkayaker.com](http://www.bostonkayaker.com)