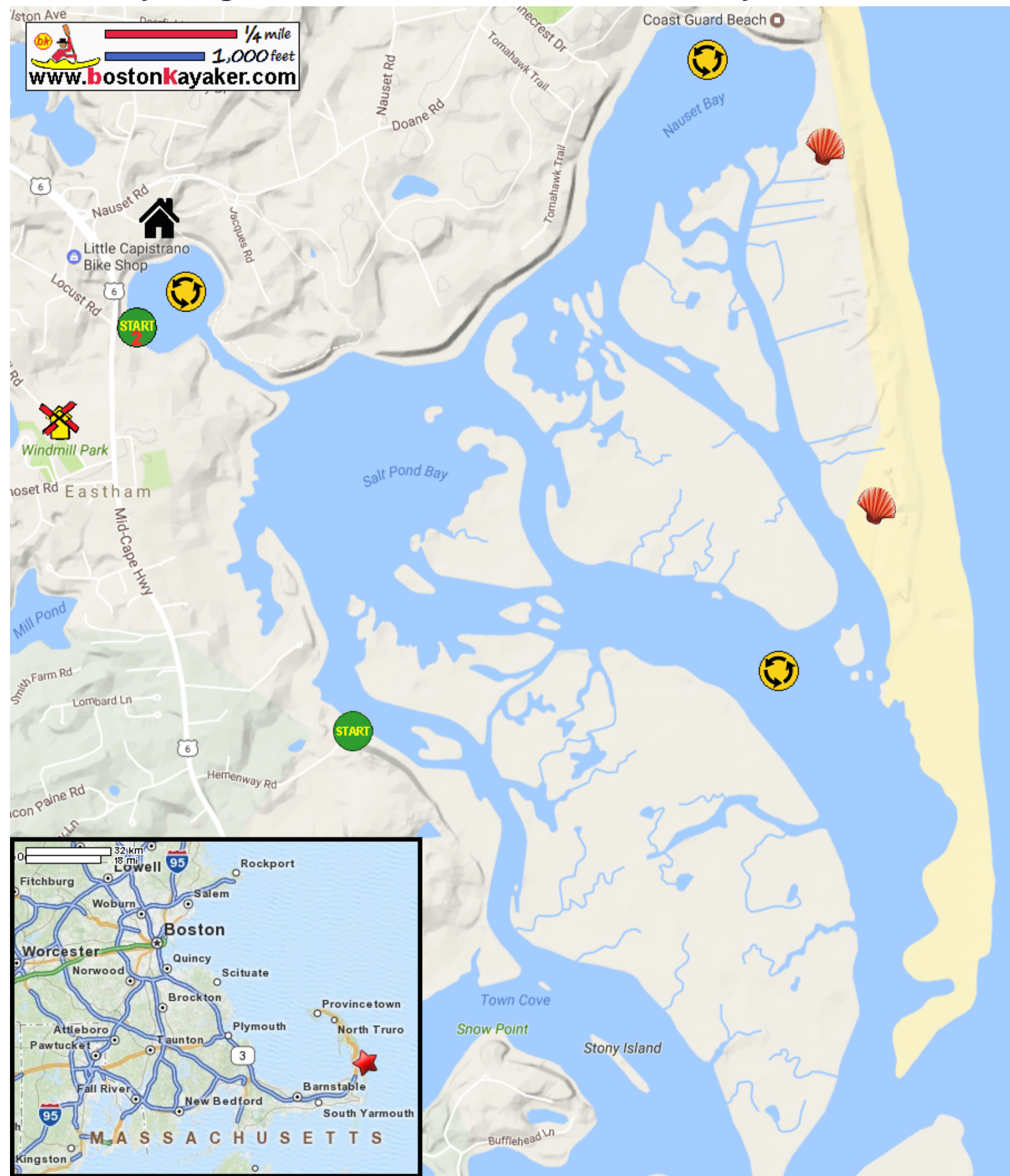










# Kayaking on Nauset Marsh and Salt Pond Bay - in Eastham MA




  
[www.bostonkayaker.com](http://www.bostonkayaker.com)



-  Put in at Hemenway Road town landing in Eastham MA.
-  Paddle around Nauset Marsh and Salt Pond then return.
-  Estimated round trip distance = 4+ miles
-  Salt Pond Visitor Center
-  Alternate put in at Salt Pond town landing on Route 6.
-  Best to start paddle 1 hour+ before high tide.
-  Cape Cod National Seashore
-  Oldest windmill in Cape Cod