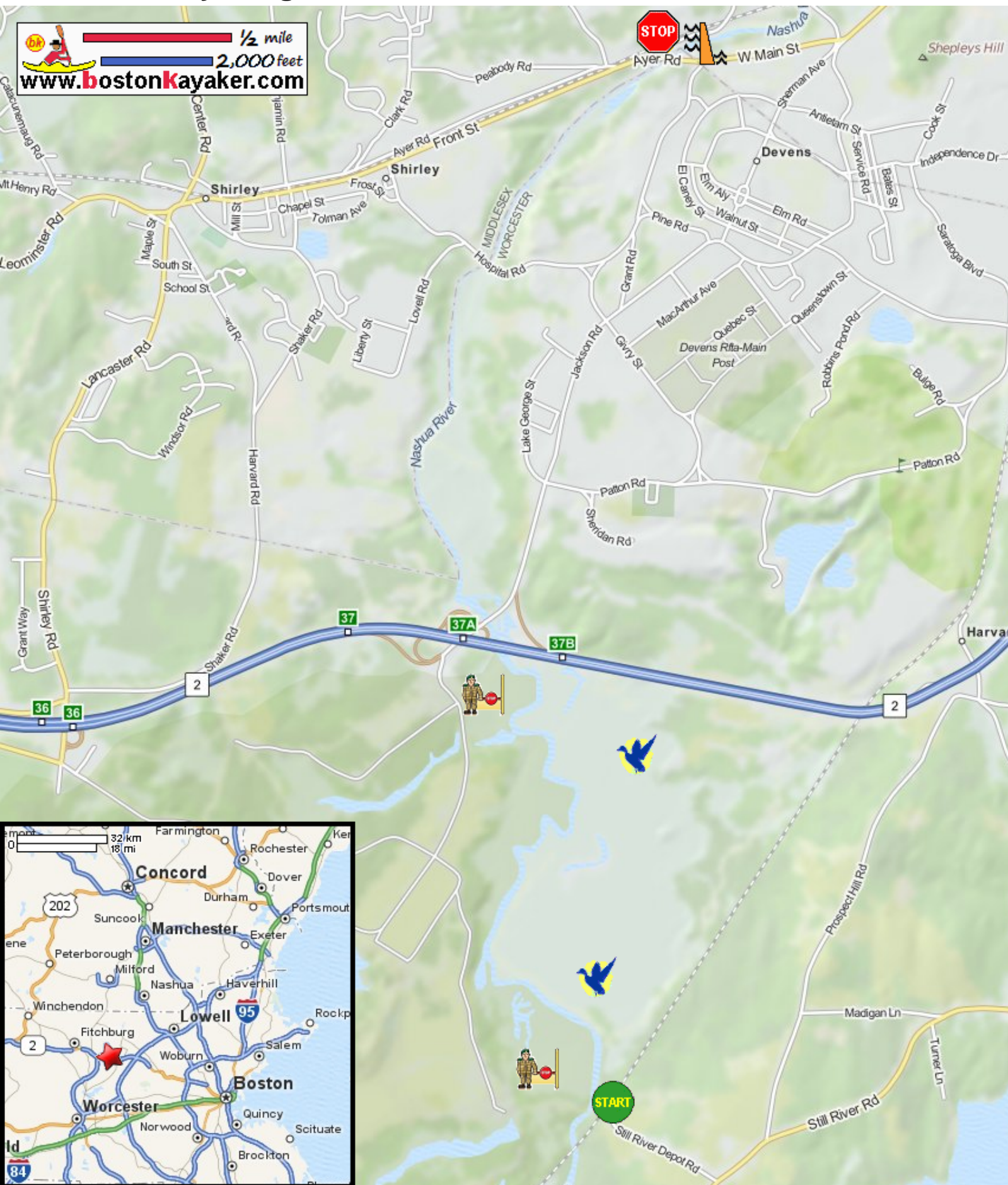









# Kayaking on Nashua River - from Harvard MA to Shirley MA


 1/2 mile  
 2,000 feet  
[www.bostonkayaker.com](http://www.bostonkayaker.com)



-  Put in at Still River Depot Road in Harvard MA.
-  Take out left before dam on Walker Road in Shirley MA.
-  Estimated distance = 5 miles
-  Ayer Ice House Dam
-  "Nashua" means "river with the pebbled bottom".
-  No landing on west bank. Military reservation.
-  Oxbow National Wildlife Refuge (NWR)