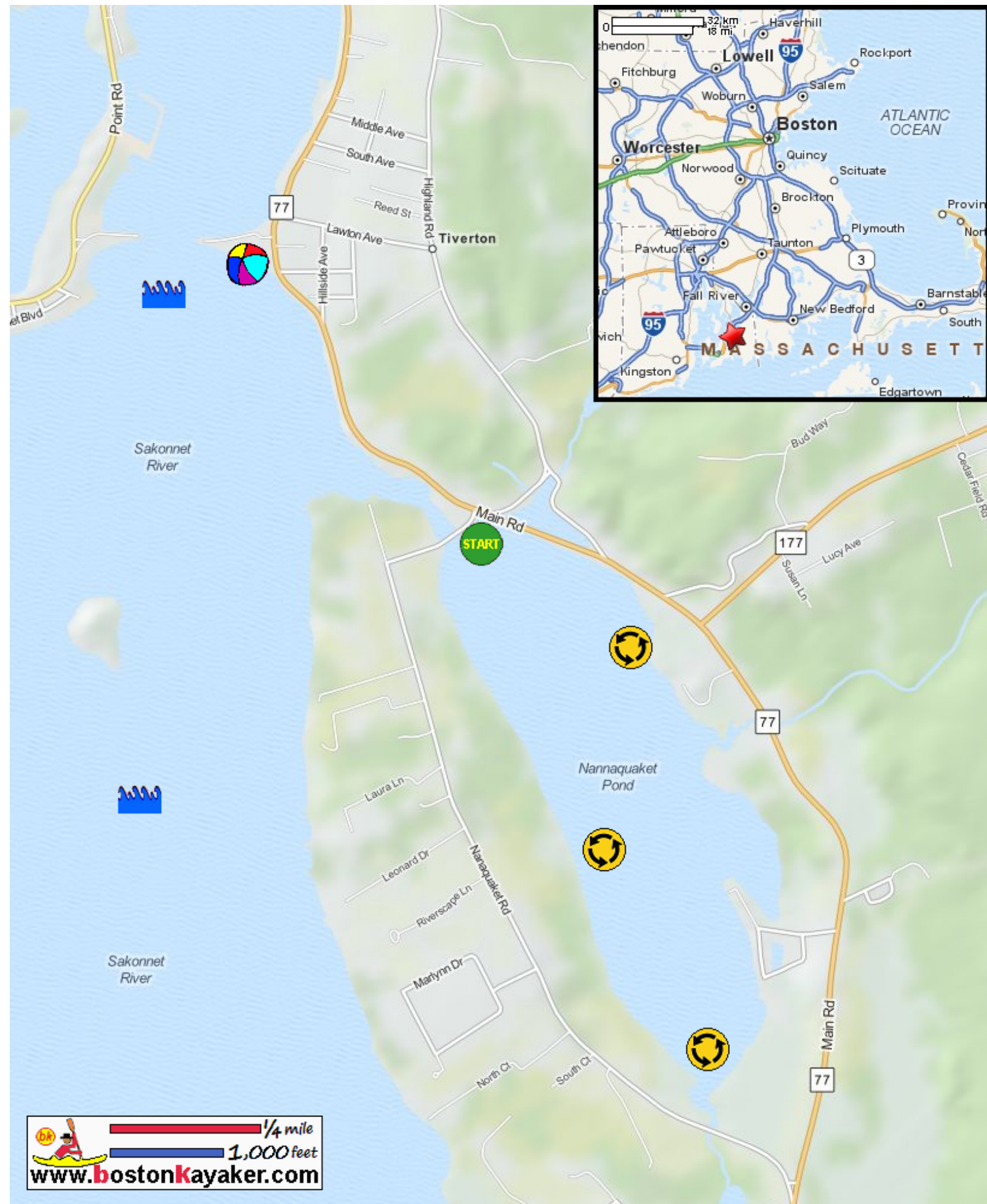







Kayaking on Nannaquaket Pond - in Tiverton RI





 1/4 mile

 1,000 feet
www.bostonkayaker.com

-  Put in at Main Road in Tiverton RI.
-  Paddle around pond and return.
-  Estimated round trip distance = 1.5+ miles
-  Grinnell's Beach
-  Big waves on Sakonnet River.