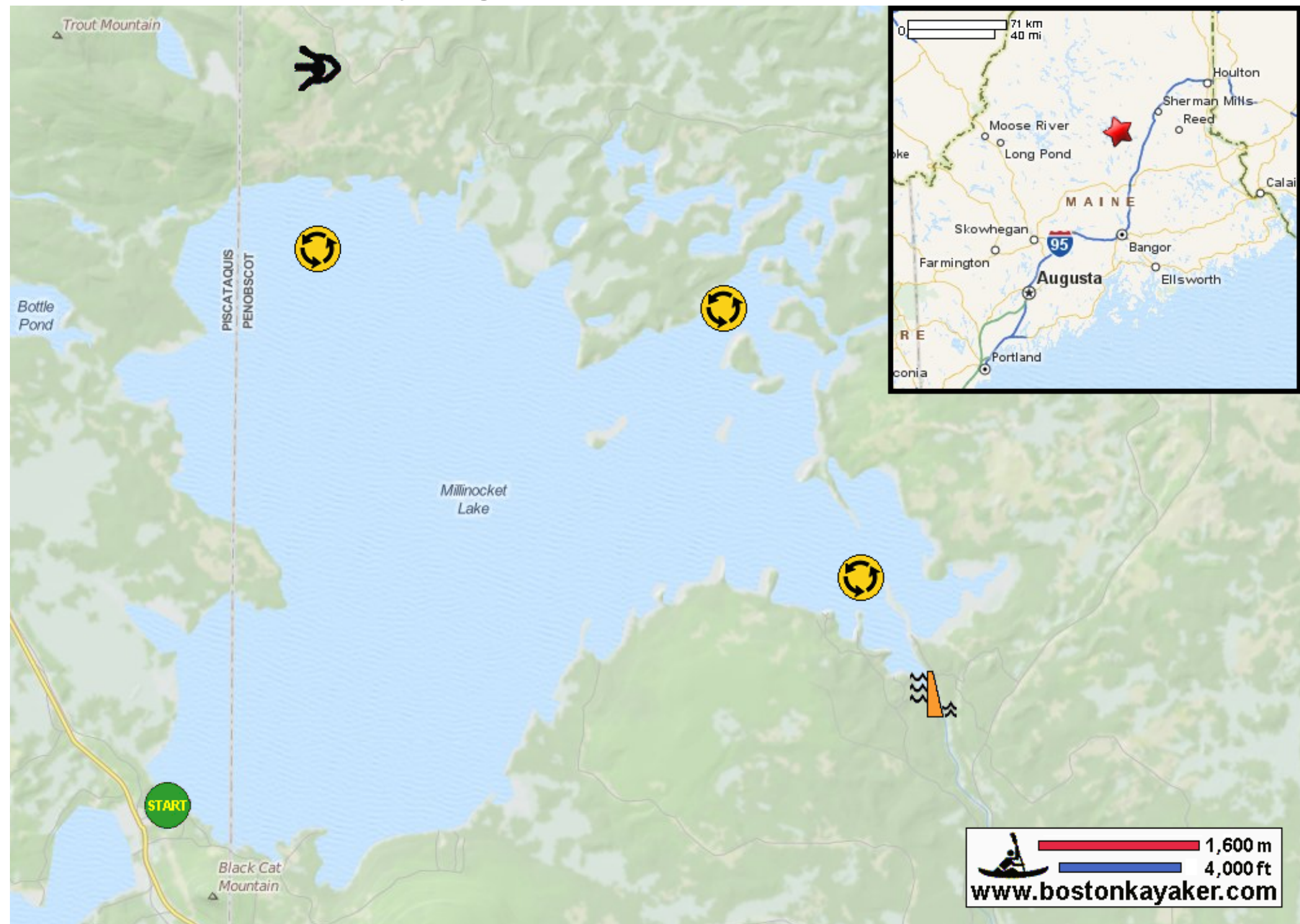








Kayaking on Millinocket Lake - in Millinocket ME



-  Put in at Baxter Park Road in Millinocket ME.
-  Paddle around lake and return.
-  Estimated round trip distance = 9+- miles
-  Millinocket Lake Dam
-  "Millinocket" means "land of many islands".
-  Mount Katahdin towers on northwest horizon.


 1,600 m
 4,000 ft
www.bostonkayaker.com