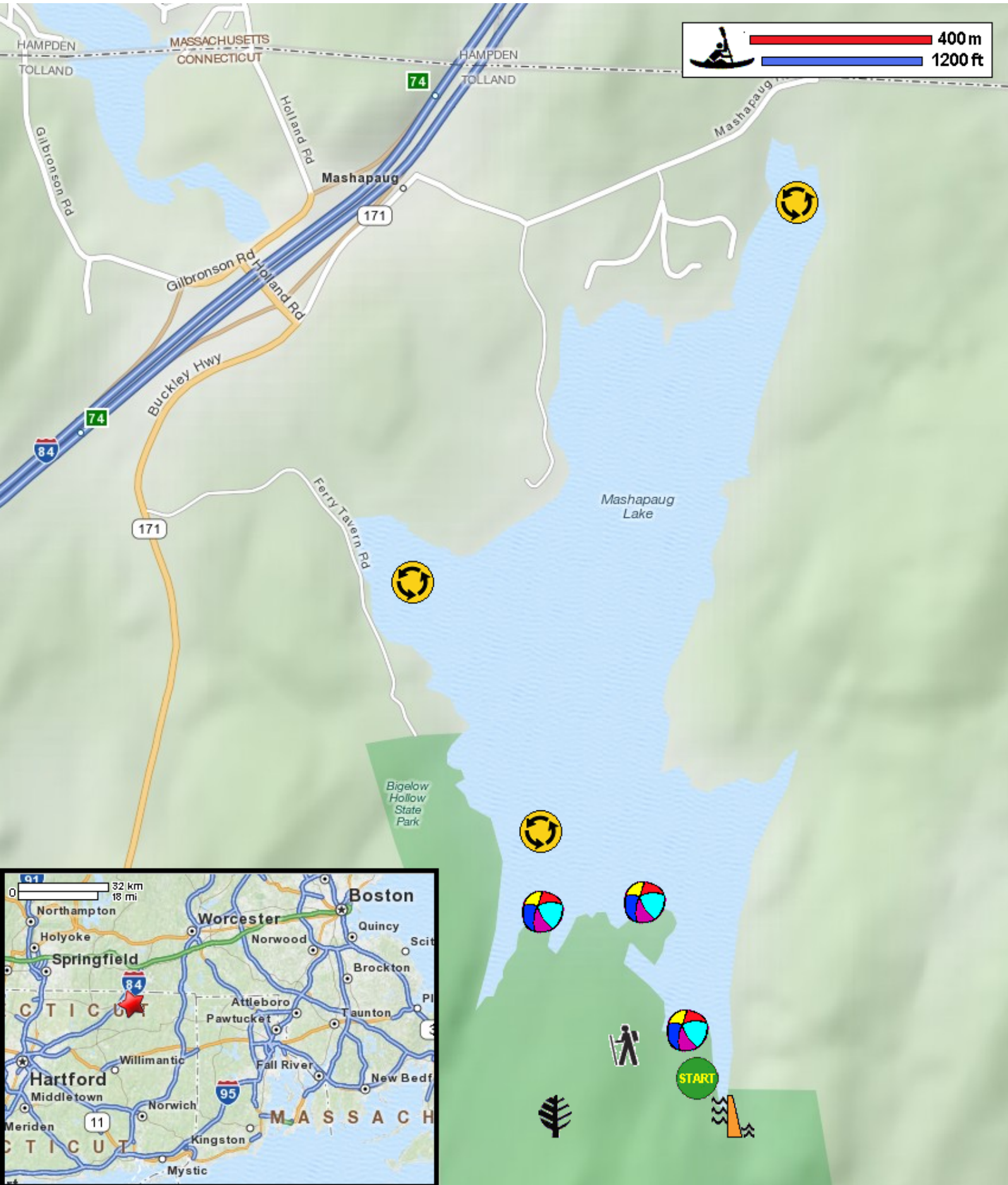







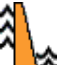


Kayaking on Mashapaug Lake - at Bigelow Hollow State Park in Union CT



 ————— 400 m
————— 1200 ft

-  Put in at boat ramp in Bigelow Hollow State Park in Union CT.
-  Paddle around Lake Mashapaug and return.
-  Estimated round trip distance = 4+ miles
-  Bigelow Hollow State Park
-  "Mashapaug" is the Nipmuck Indian word for "great pond".
-  Can hike to northern beaches and picnic areas.
-  Swimming and picnic areas
-  Lake Mashapaug Dam