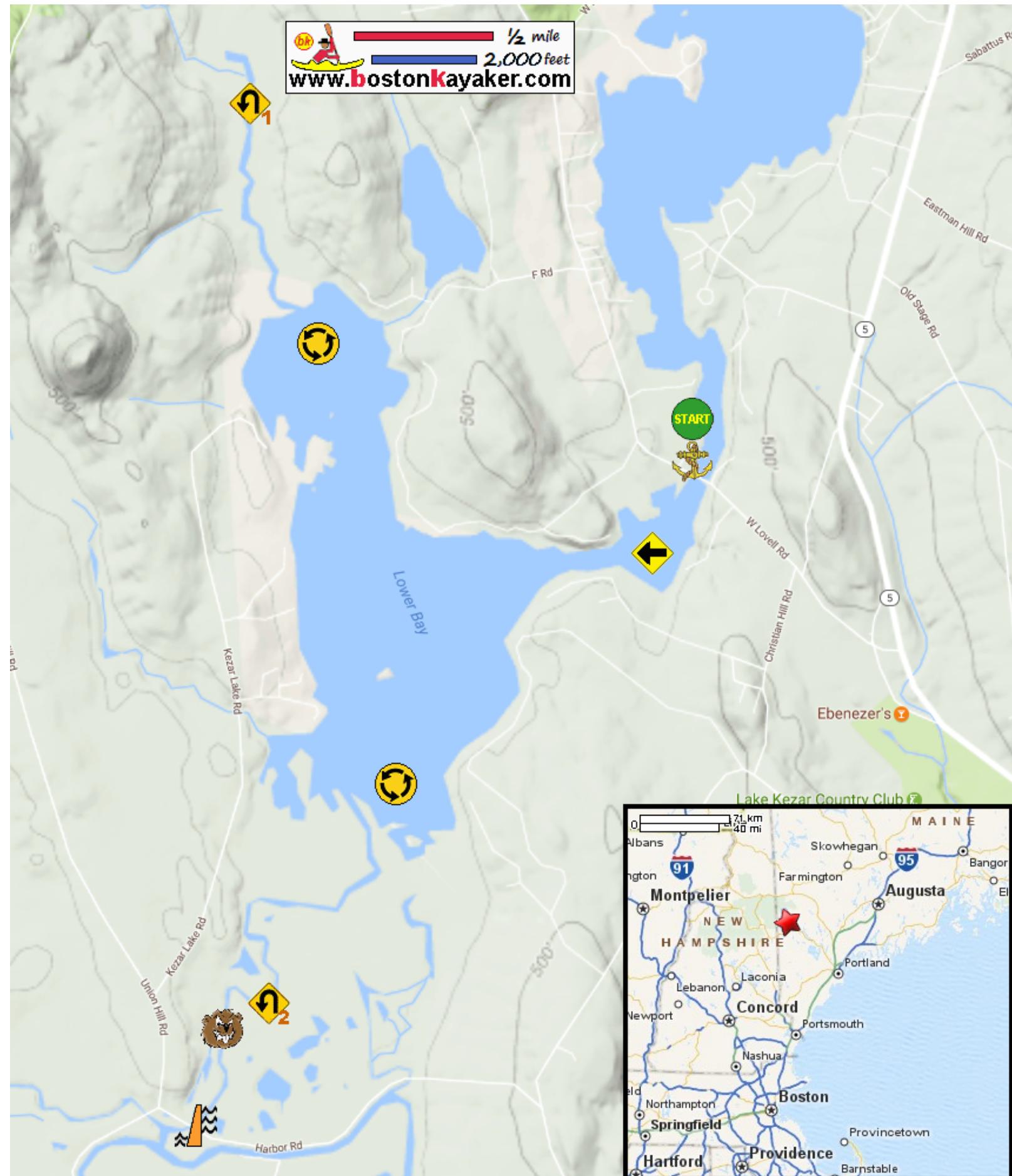










# Kayaking on Kezar Lake's Lower Bay - in Lovell ME


 1/2 mile  
 2,000 feet  
[www.bostonkayaker.com](http://www.bostonkayaker.com)



-  Put in at Town Beach Road in Lovell ME.
-  Paddle south then east and around Lower Bay.
-  Paddle up on the Sucker Brook inlet and return.
-  Paddle down on the south outlet and return.
-  Lake Kezar Marina
-  Beaver dams
-  Lake Kezar Dam
-  Estimated round trip distance = 5+ miles