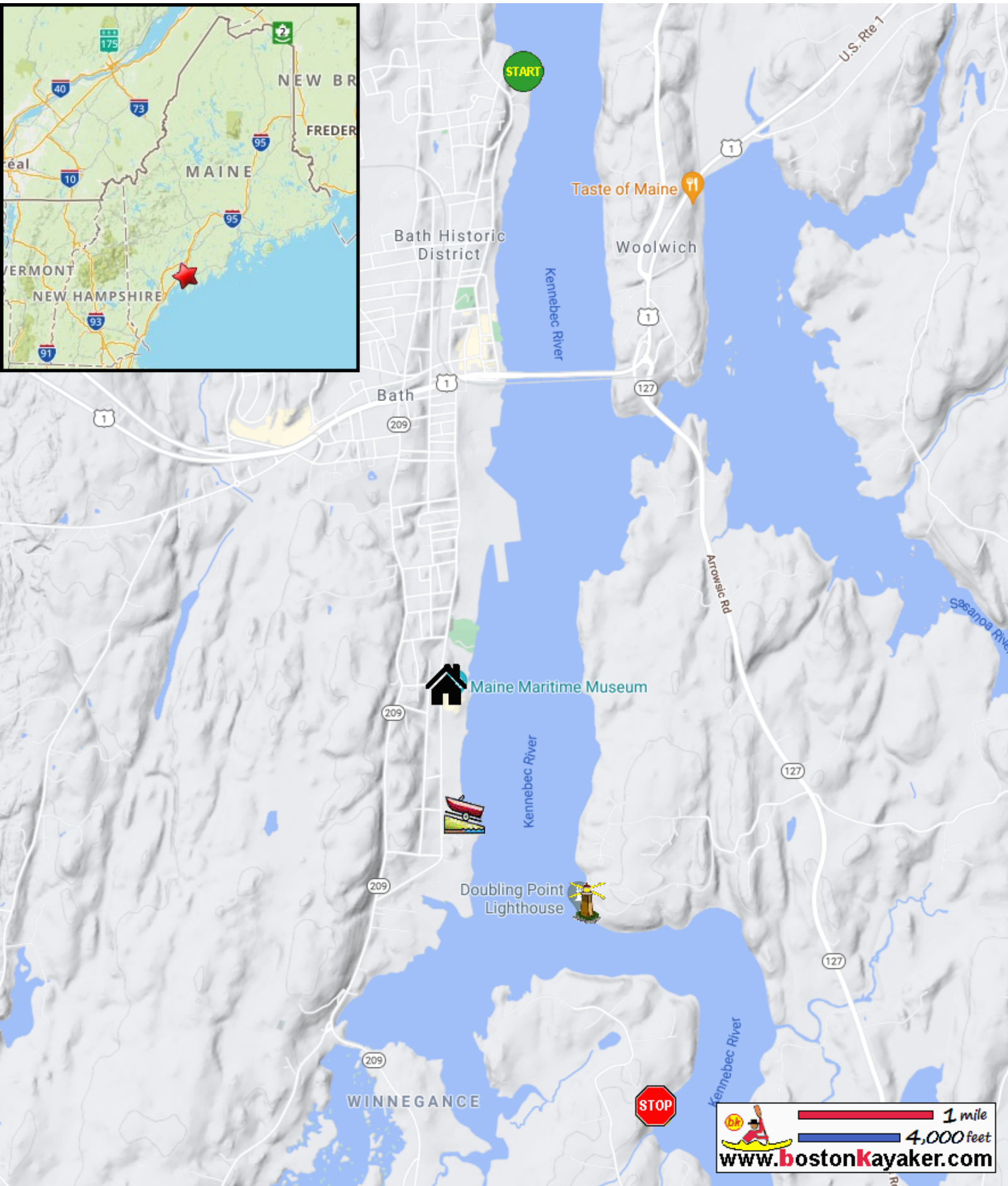









Kayaking on Kennebec River - from Bath ME to Phippsburg ME



-  Put in at Town Landing Road ramp in Bath ME.
-  Take out at Morse Cove ramp on Blaisdell Drive in Phippsburg ME.
-  Estimated distance = 4 miles
-  South End Boat Launch
-  Best to paddle when tide is receding.
-  Double Point Lighthouse
-  Maine Maritime Museum