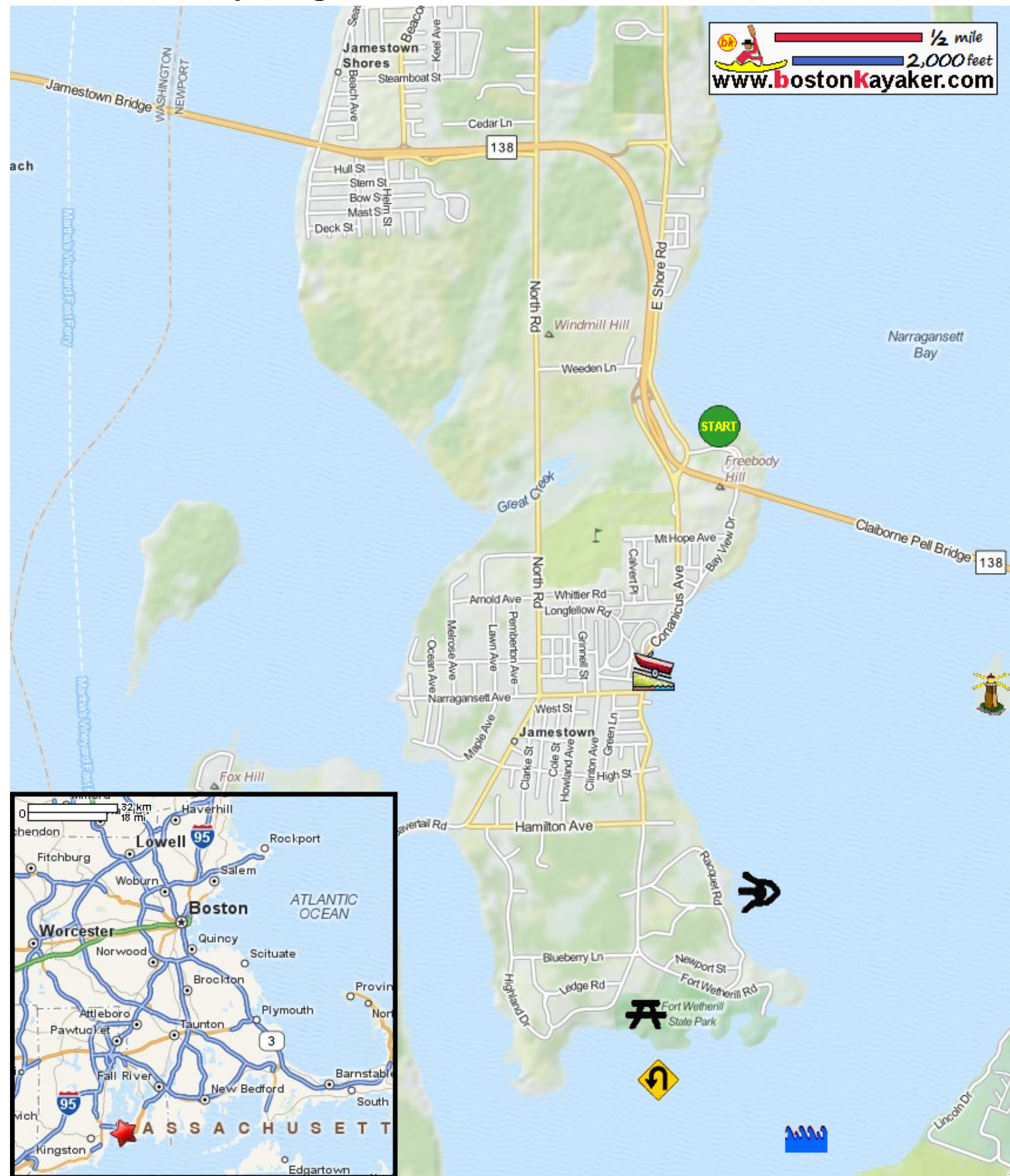










Kayaking on Jamestown Harbor - in Jamestown RI

1/2 mile
2,000 feet
www.bostonkayaker.com



-  Put in at Taylor Point on Freebody Drive in Jamestown RI.
-  Paddle south along the coast to state park and return.
-  Estimated round trip distance = 6+ miles
-  Rose Island Lighthouse
-  Jamestown beach and ramp - alternate put in spot
-  Fort Wetherill State Park - alternate put in spot
-  Open ocean best for experienced paddlers.
-  "The Dumping" mountain