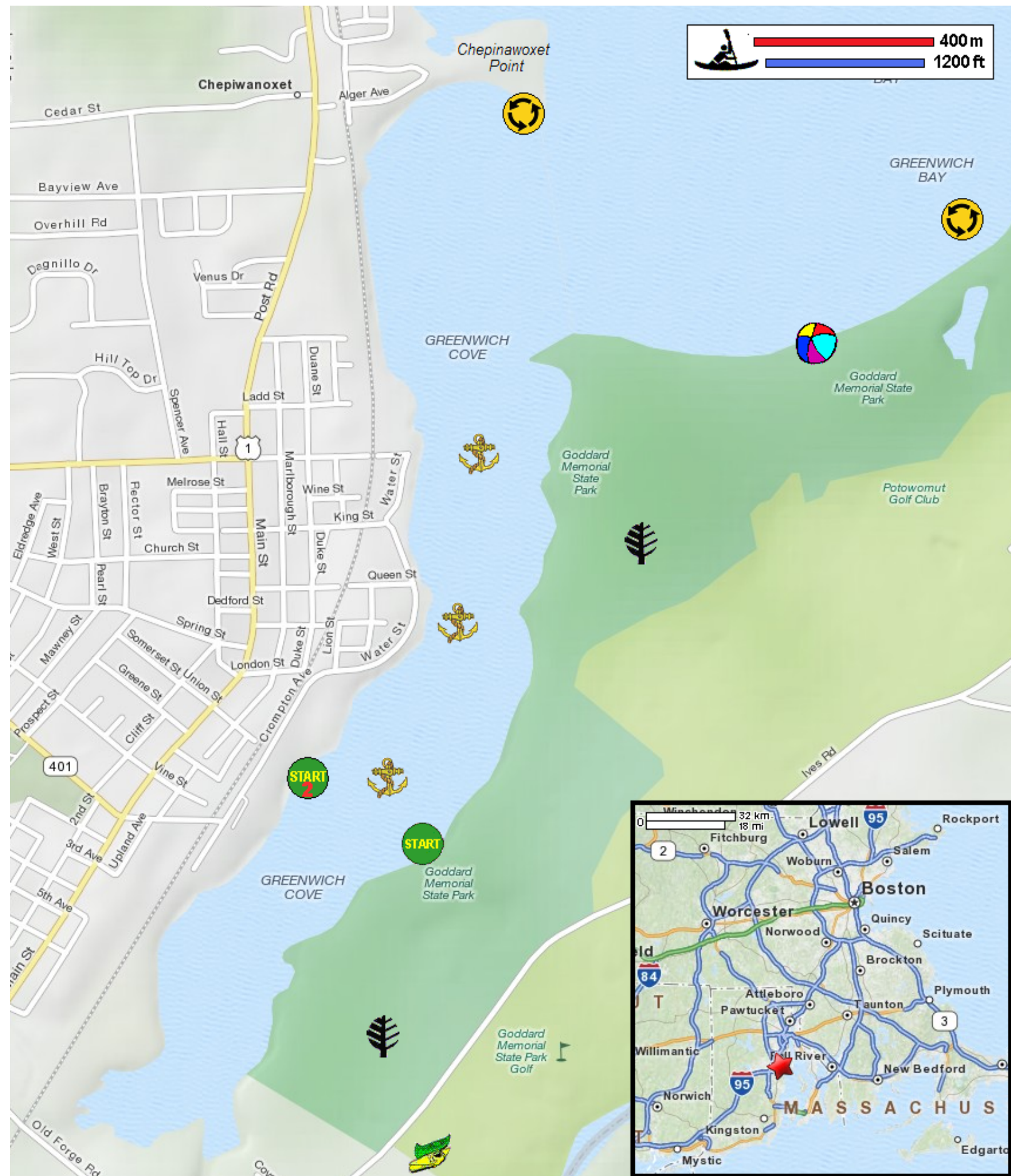










On Greenwich Cove and Greenwich Bay - in East Greenwich RI



-  Put in at park ramp on Ives Road in East Greenwich RI.
-  Paddle to Chepinawoxet Point and Greenwich Bay then return.
-  Estimated round trip distance = 3.5 miles
-  Goddard Memorial State Park
-  Alternate put in at Compton Ave. ramp in East Greenwich RI.
-  Greenwich Cove Marina
-  Public beach and picnic area
-  Narragansett Bay Kayak Rentals