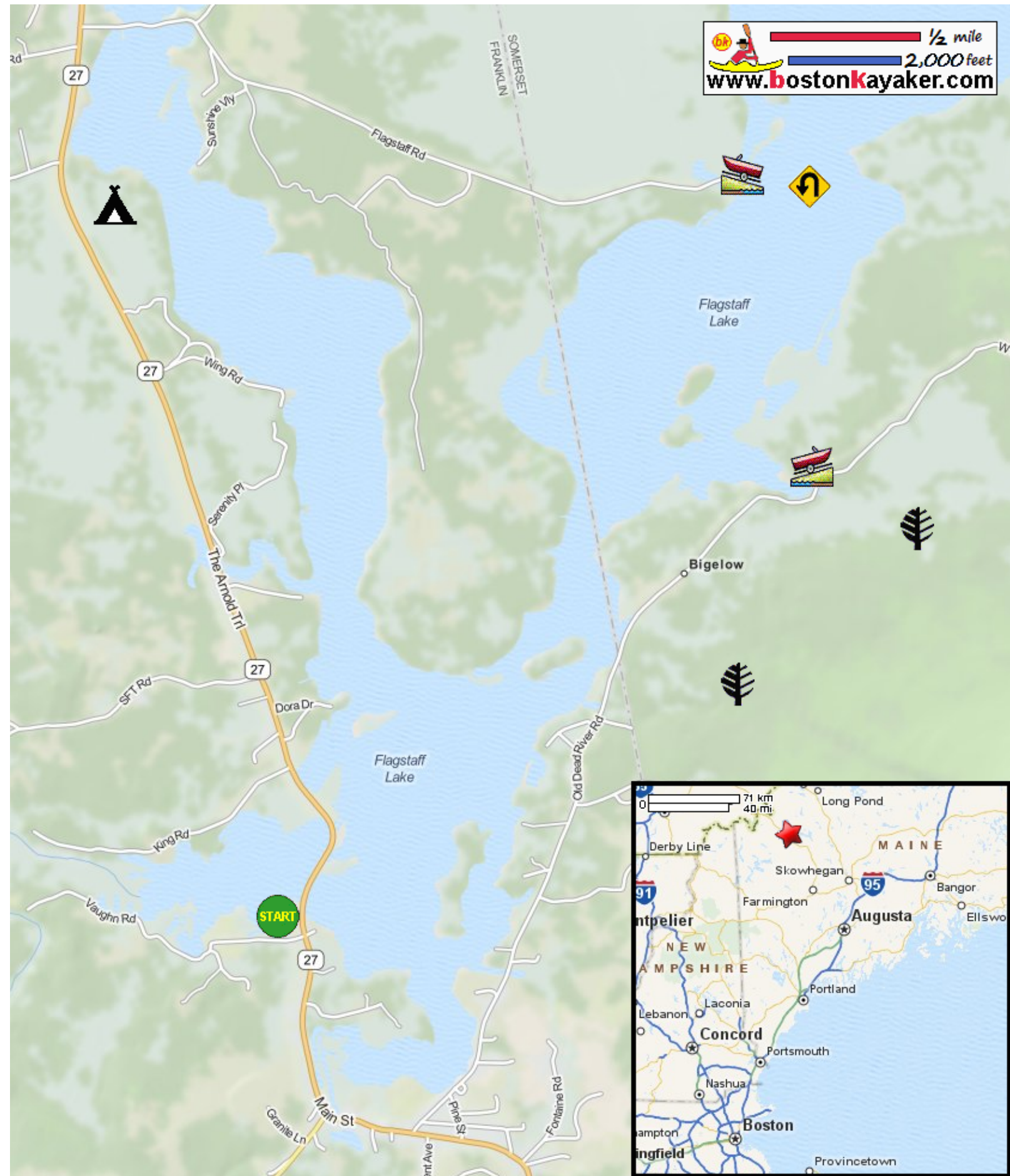









Kayaking on Flagstaff Lake - western section from Route 27 in Eustis ME

www.bostonkayaker.com

1/2 mile (red line)
2,000 feet (blue line)



-  Put in at The Amold Trail / Route 27 near Vaughn Road in Eustis ME.
-  Paddle northeast to boat ramp and return.
-  Estimated round trip distance = 7 to 8 miles
-  Cathedral Pines Campground
-  Flagstaff Boat Ramp
-  Bigelow Boat Ramp
-  Bigelow Preserve