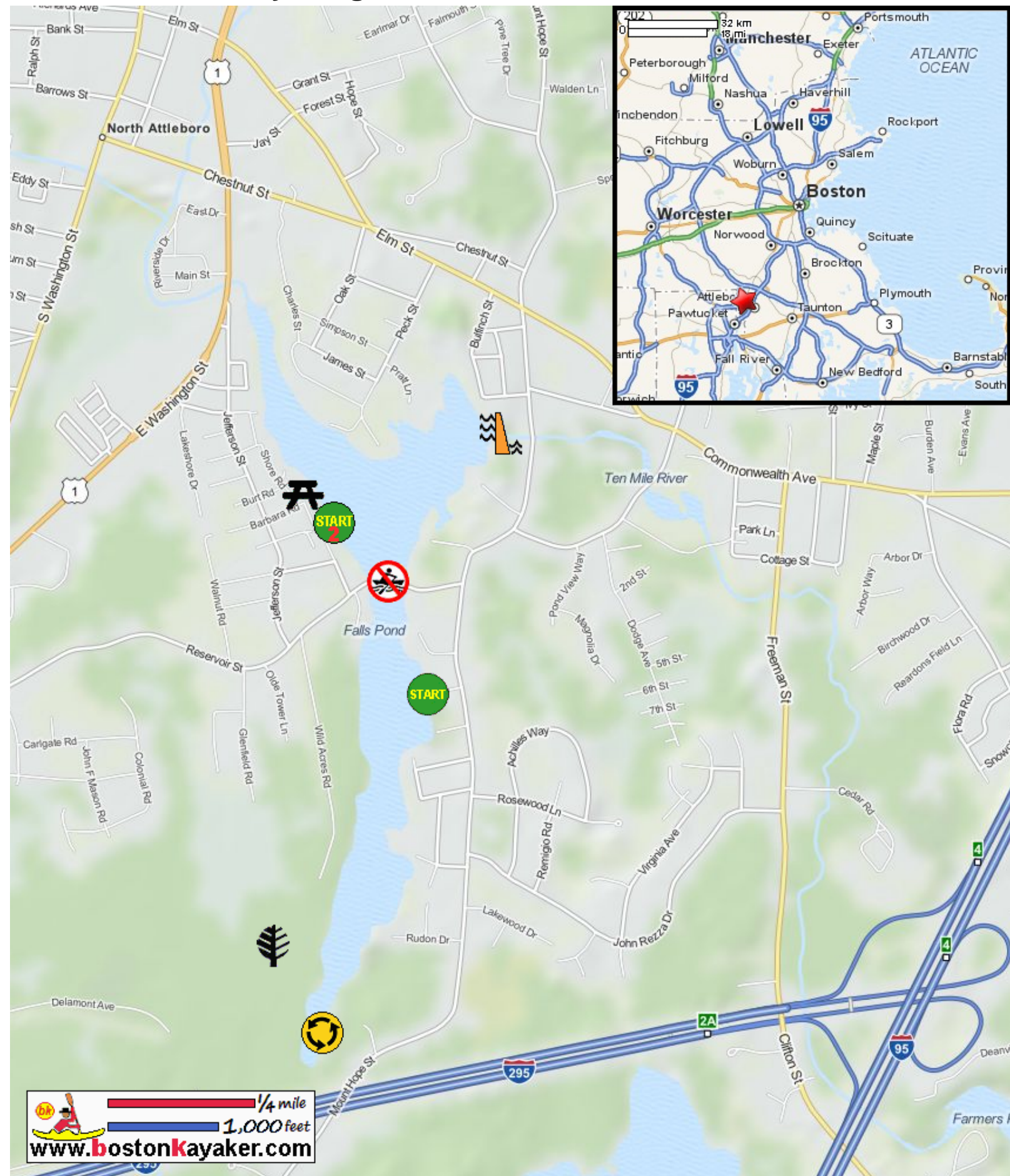










Kayaking on Falls Pond - in North Attleboro MA



www.bostonkayaker.com

-  Put in at Metters Street in North Attleboro MA.
-  Paddle around Falls Pond south basin and return.
-  Estimated round trip distance = 1+ miles
-  No water passage to north basin.
-  Put in at Barbara Road for north basin paddle.
-  Joseph Zaino Memorial Recreation Park
-  Falls Pond Dam
-  Martin Conservation Area