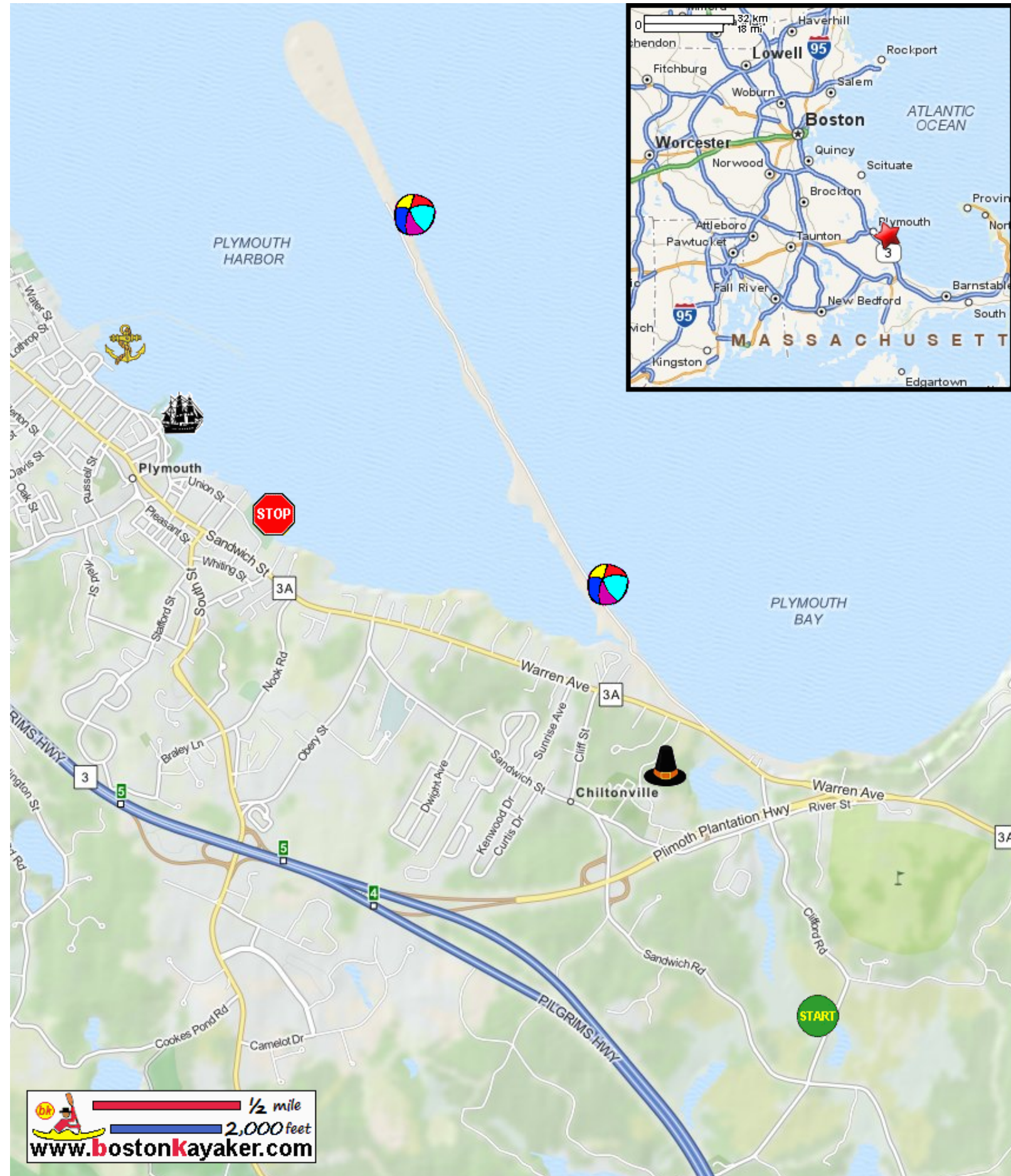










Kayaking on Eel River and Plymouth Harbor - in Plymouth MA




 1/2 mile
 2,000 feet
www.bostonkayaker.com

-  Put in at Clifford Road in Plymouth MA.
-  Take out at Stephens Field on Union Street in Plymouth MA.
-  Estimated distance = 2.5+ miles
-  Plymouth Long Beach
-  Best to paddle when tide is high and receding.
-  Plymouth Town Wharf
-  Plymouth Plantation
-  Mayflower II