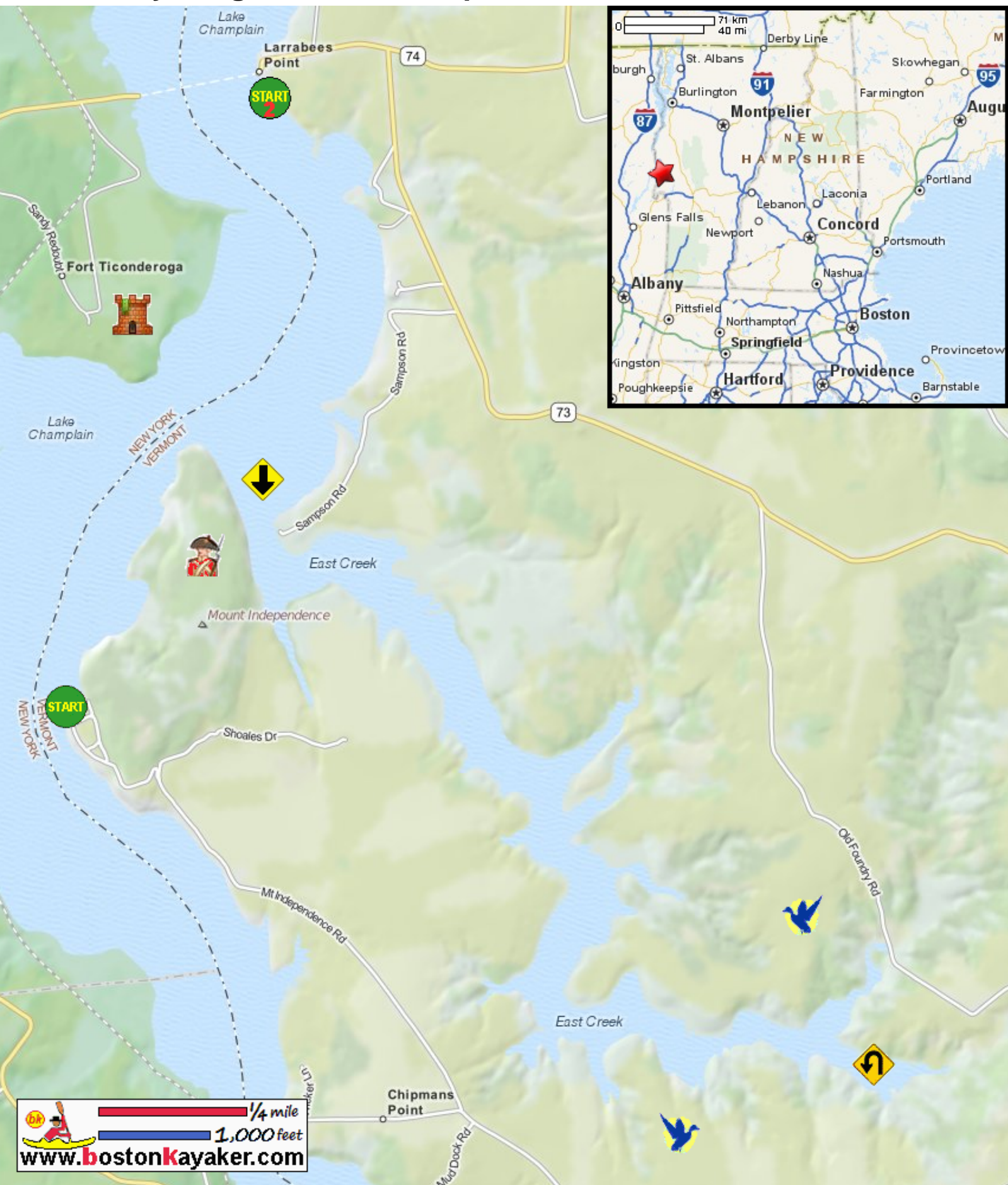










# Kayaking on Lake Champlain and East Creek - in Orwell VT



-  Put in at Larrabees Point.
-  Alternate put in at Mt. Independence Road in Orwell VT.
-  Paddle around Mt. Independence and enter East Creek.
-  Mt. Independence State Historic Park and Museum
-  Paddle to end of creek and return.
-  East Creek Wildlife Area
-  Estimated round trip distance = 10+/- miles
-  Fort Ticonderoga State Park