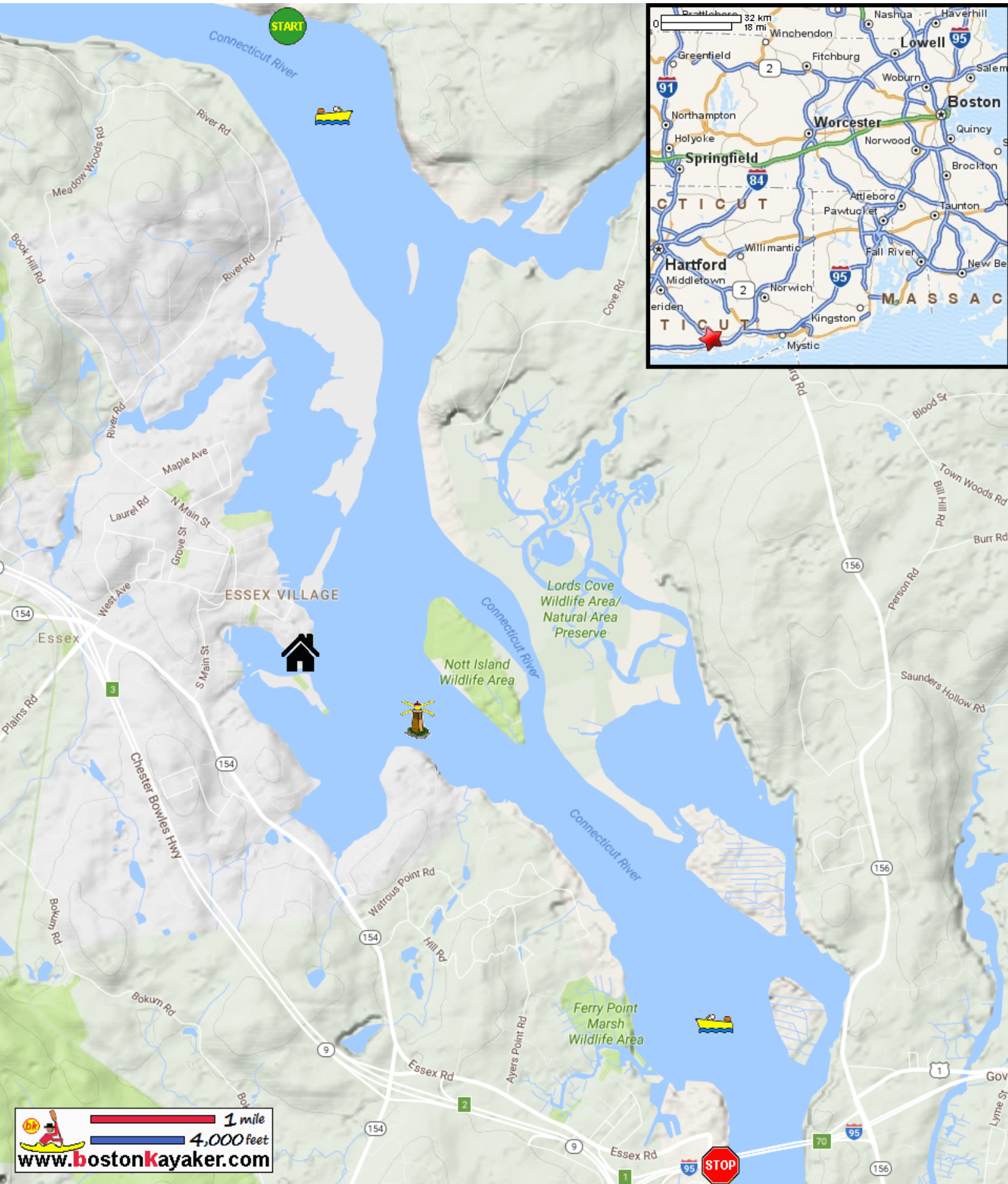










Kayaking on Connecticut River - from Lyme CT to Old Saybrook CT



-  Put in at Brockway Ferry Road in Lyme CT.
-  Take out at Ferry Road in Old Saybrook CT.
-  Connecticut River Museum
-  Connecticut River busy with marine traffic.
-  Essex Reef Lighthouse
-  Essex Reef Lighthouse
-  Estimated distance = 6.5+ miles
-  Best to paddle when tide is receding.