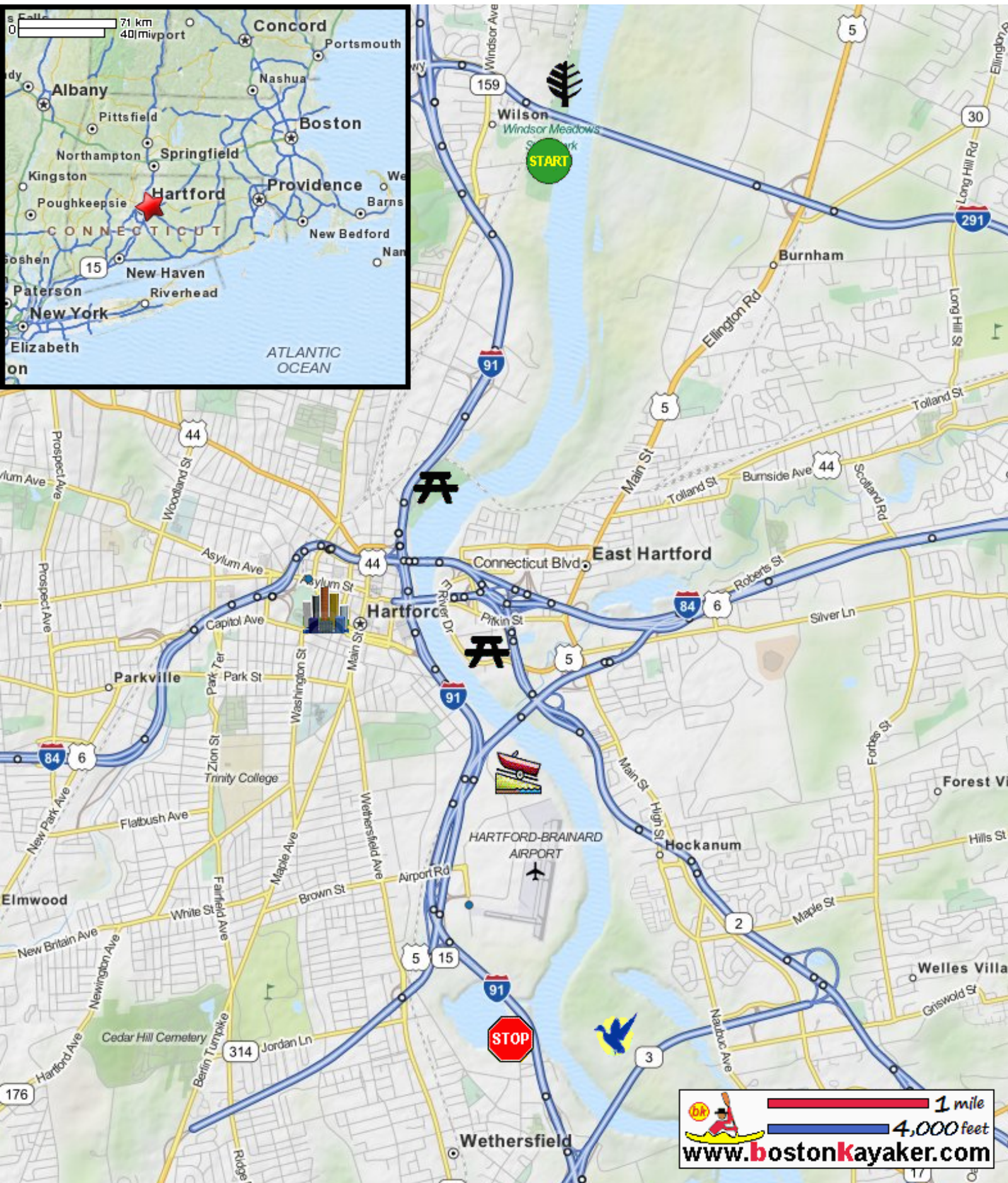


Kayaking on Connecticut River - from Windsor CT to Wethersfield CT



- Put in at Bisselle Bridge on East Barber Street in Windsor CT.
- Take out at Wethersfield Cove on Main Street in Wethersfield CT.
- Hartford skyline suddenly rises after right bend.
- Hartford river front parks
- Estimated distance = 7 miles
- Keeny Cove Wildlife Area
- Windsor Meadows State Park
- Charter Oak landing

1 mile
 4,000 feet
www.bostonkayaker.com