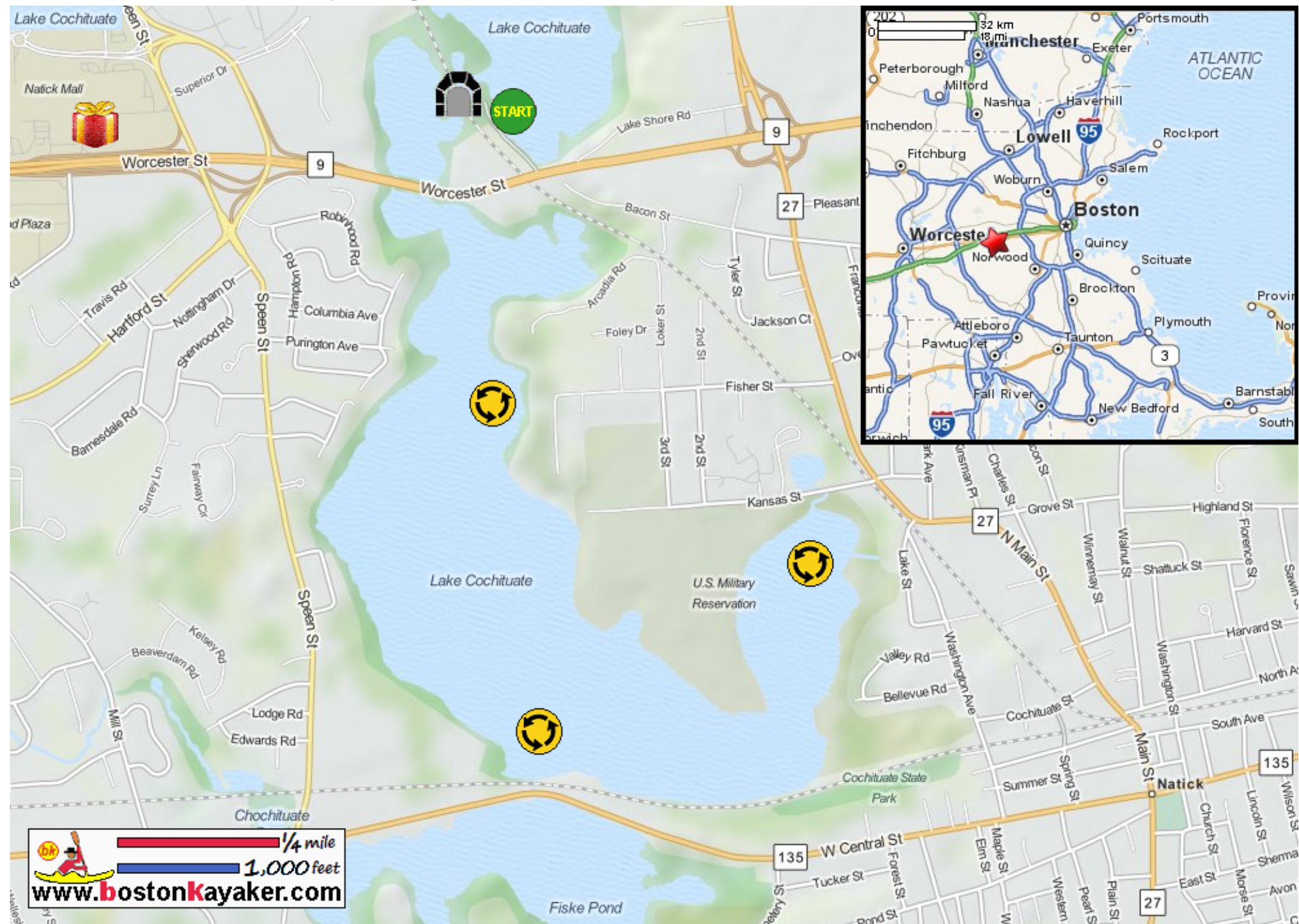


Kayaking on Lake Cochituate South Pond - in Natick MA



- Put in at John Sheridan Way in Natick MA.
- Paddle thru "The Keyhole".
- Paddle around Lake Cochituate South Pond and return.
- Estimated round trip distance = 3.5+ miles
- Natick Mall

1/4 mile
 1,000 feet
www.bostonkayaker.com