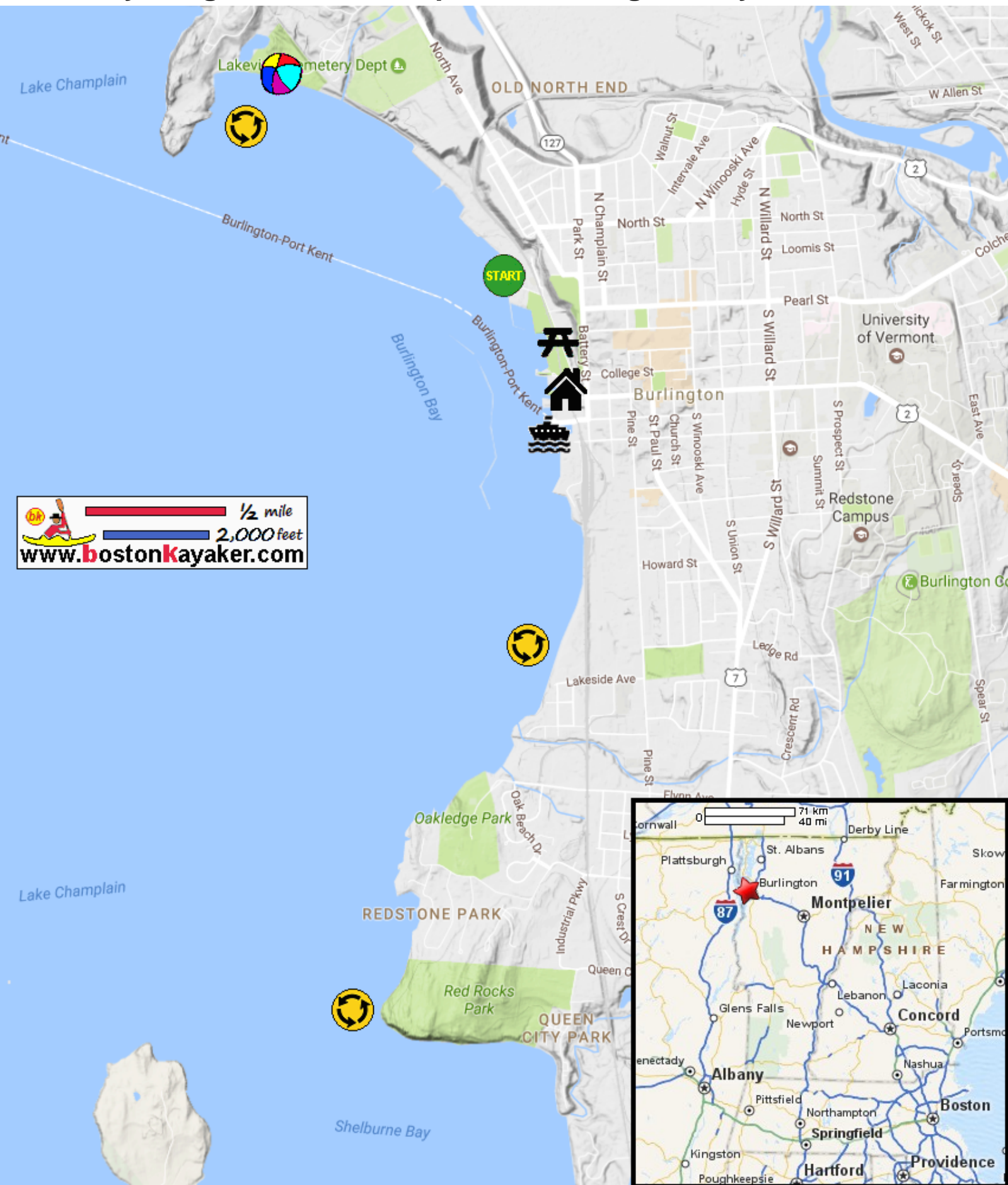









Kayaking on Lake Champlain's Burlington Bay - in Burlington VT




 1/2 mile
 2,000 feet
www.bostonkayaker.com

-  Put in at Community Sailing Center on Penny Lane in Burlington VT.
-  Paddle around Burlington Bay and return.
-  Estimated round trip distance = 7+ miles
-  Waterfront Park
-  Leahy Center for Lake Champlain
-  North Beach Park
-  Perkins Pier