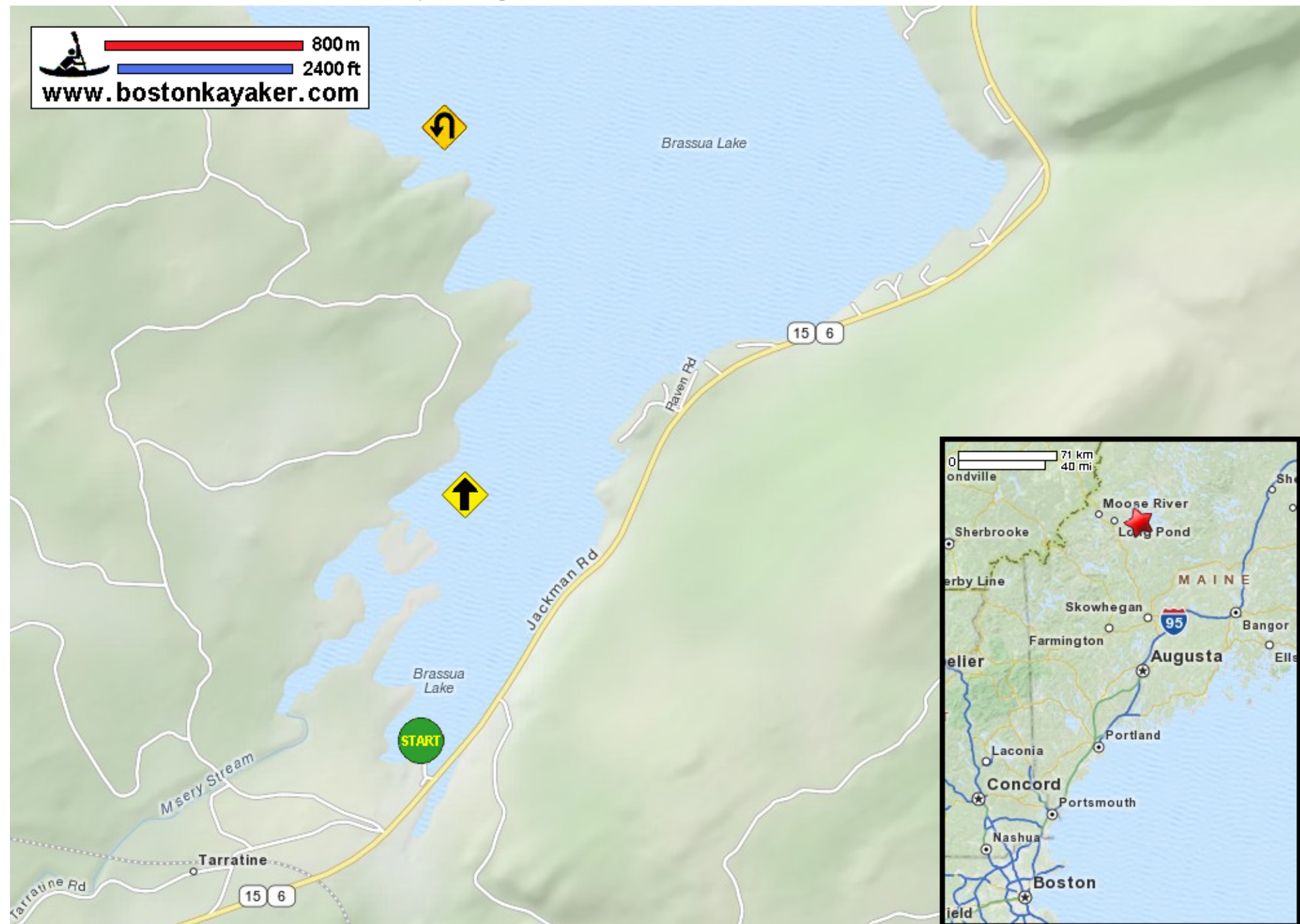


Kayaking on Brassua Lake - in Rockwood ME



800 m
2400 ft
www.bostonkayaker.com



Put in at boat ramp off Jackman Road / Route 15 in Rockwood ME.



Paddle along western coast and return.



Estimated round trip distance = 3+ miles



The part of Brassua Lake shown in this map is about 1/10th of the whole lake.