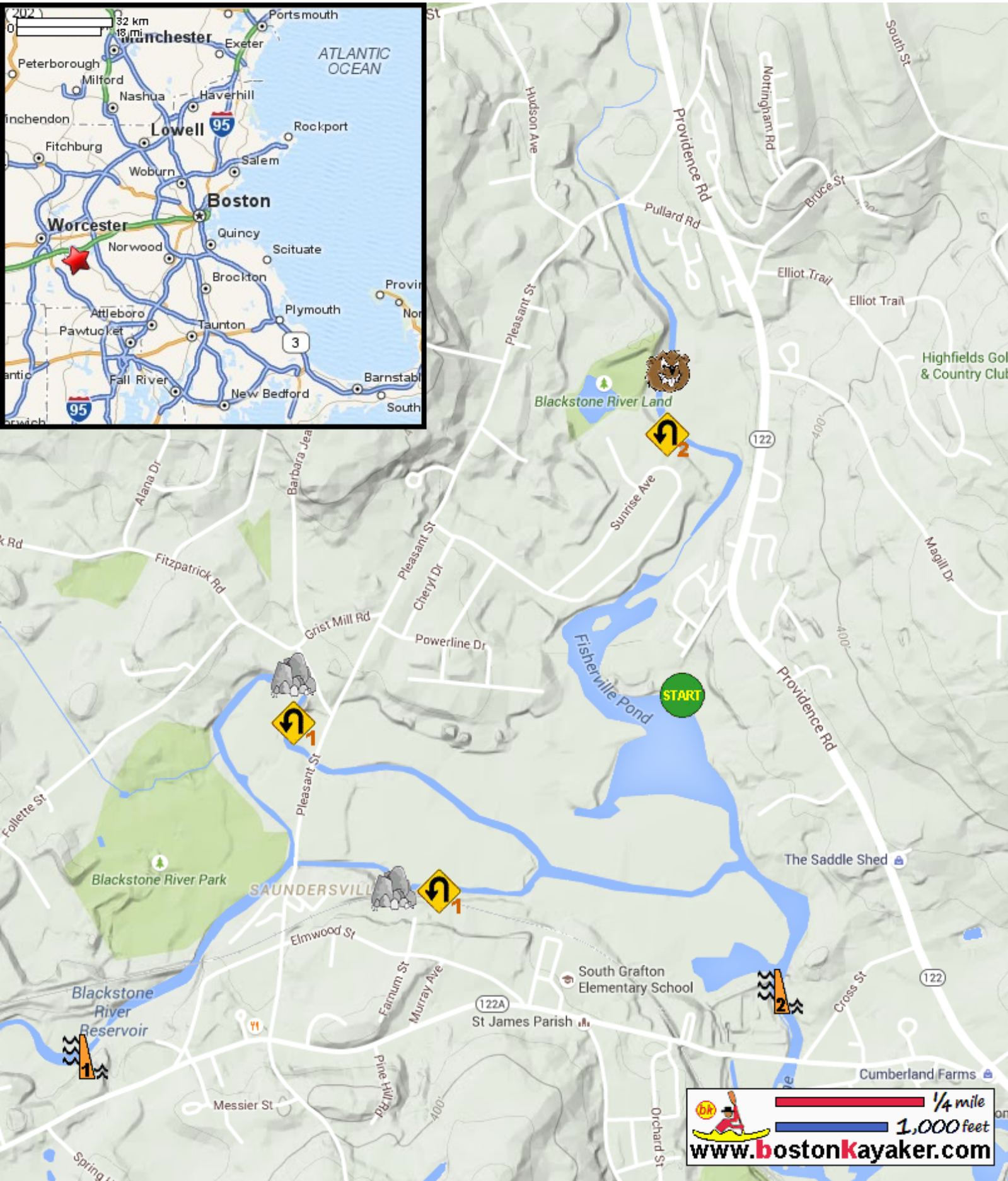










# Kayaking on Fisherville Pond - on Blackstone and Quinsigamond Rivers in Grafton MA



 1/4 mile  
 1,000 feet  
[www.bostonkayaker.com](http://www.bostonkayaker.com)

-  Put in at River View Apartments on Providence Road in Grafton MA.
-  Paddle up on Quinsigamond River to beaver dams and return.
-  Rock gardens on Blackstone
-  Beaver dams on Quinsigamond
-  Paddle down to Blackstone River rock gardens and return.
-  Estimated round trip distance = 4.5+ miles
-  Saundersville Mill Dam
-  Fisherville Pond Dam