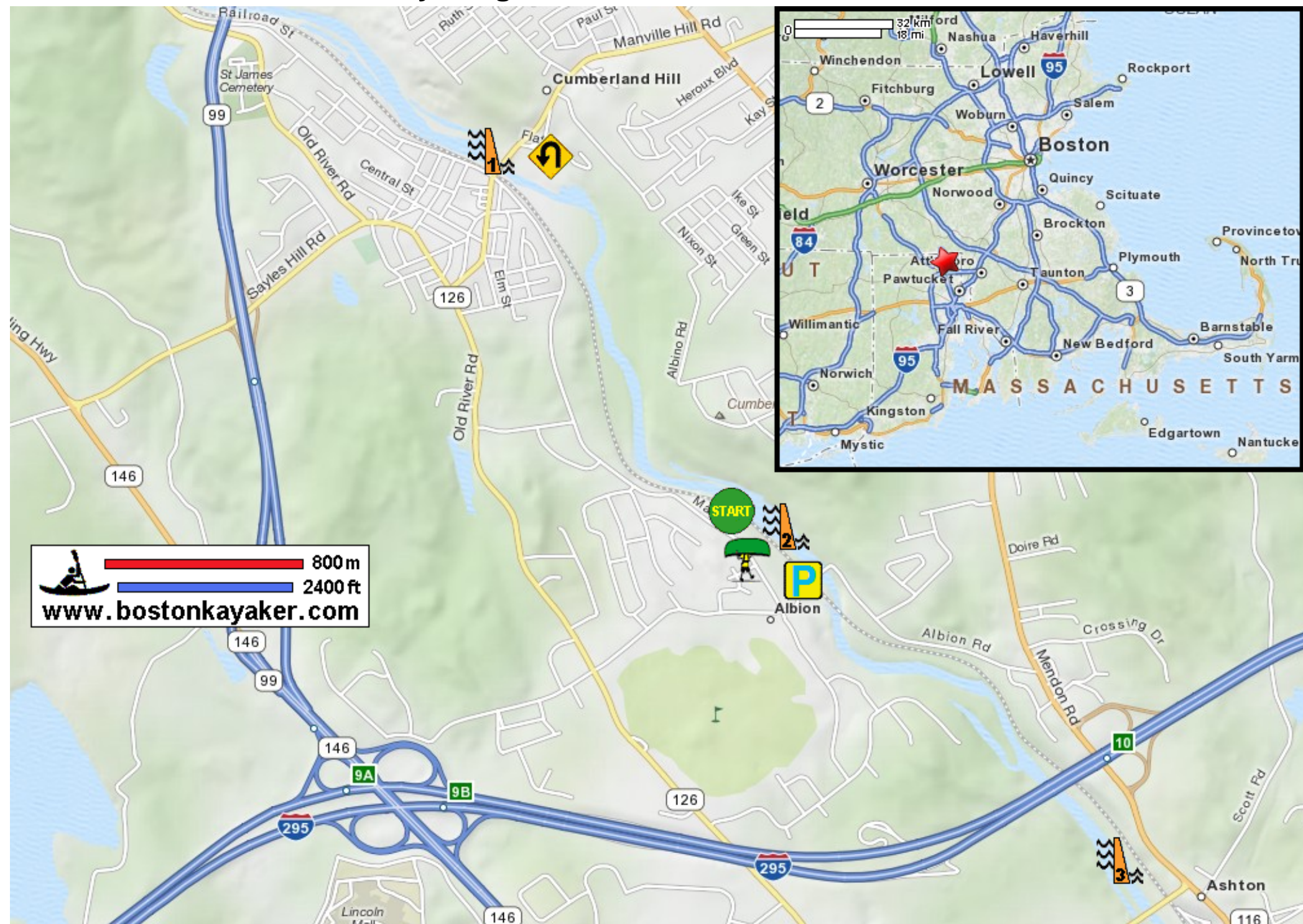









Kayaking on Blackstone River - in Albion RI




 800m
 2400ft
www.bostonkayaker.com

-  Portage from parking lot to put in 300+ feet .
-  **START** Put in above dam on Albion Road in Cumberland RI.
-  Paddle upriver to Manville Dam and return.
-  Estimated round trip distance = 2.5 miles
-  1 Manville Dam
-  2 Albion Dam
-  3 Ashton Dam