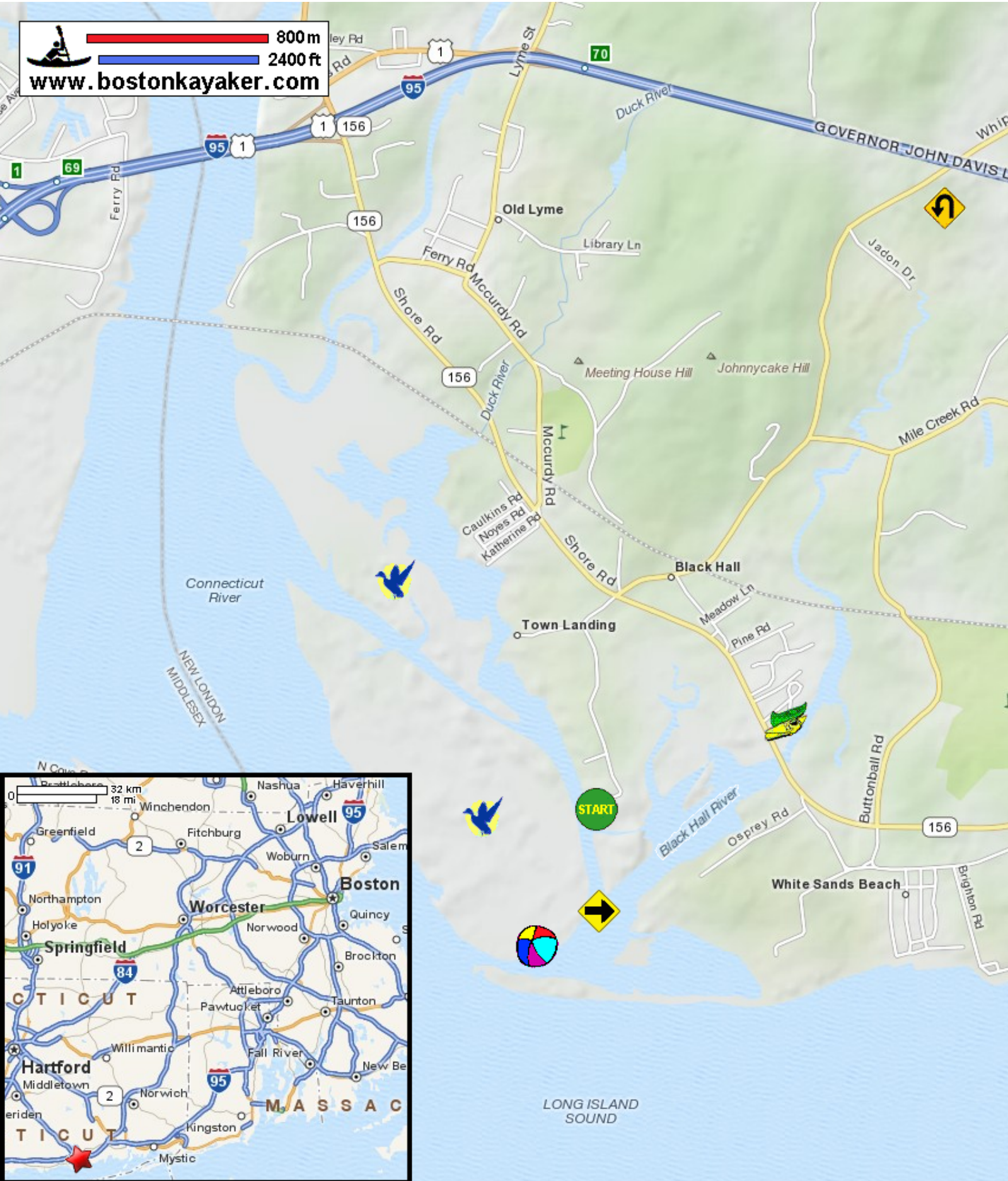









# Kayaking on Black Hall River - in Old Lyme CT


800 m  
2400 ft  
[www.bostonkayaker.com](http://www.bostonkayaker.com)



-  Put in at Town Landing on Smith Neck Road in Old Lyme CT.
-  Paddle south then east up Black Hall River and return.
-  Estimated round trip distance = 5+ miles
-  Great Island Wildlife Area
-  Best to start trip 1 hour+ before high tide.
-  Black Hall Marina and kayak rentals
-  Poverty Island Beach