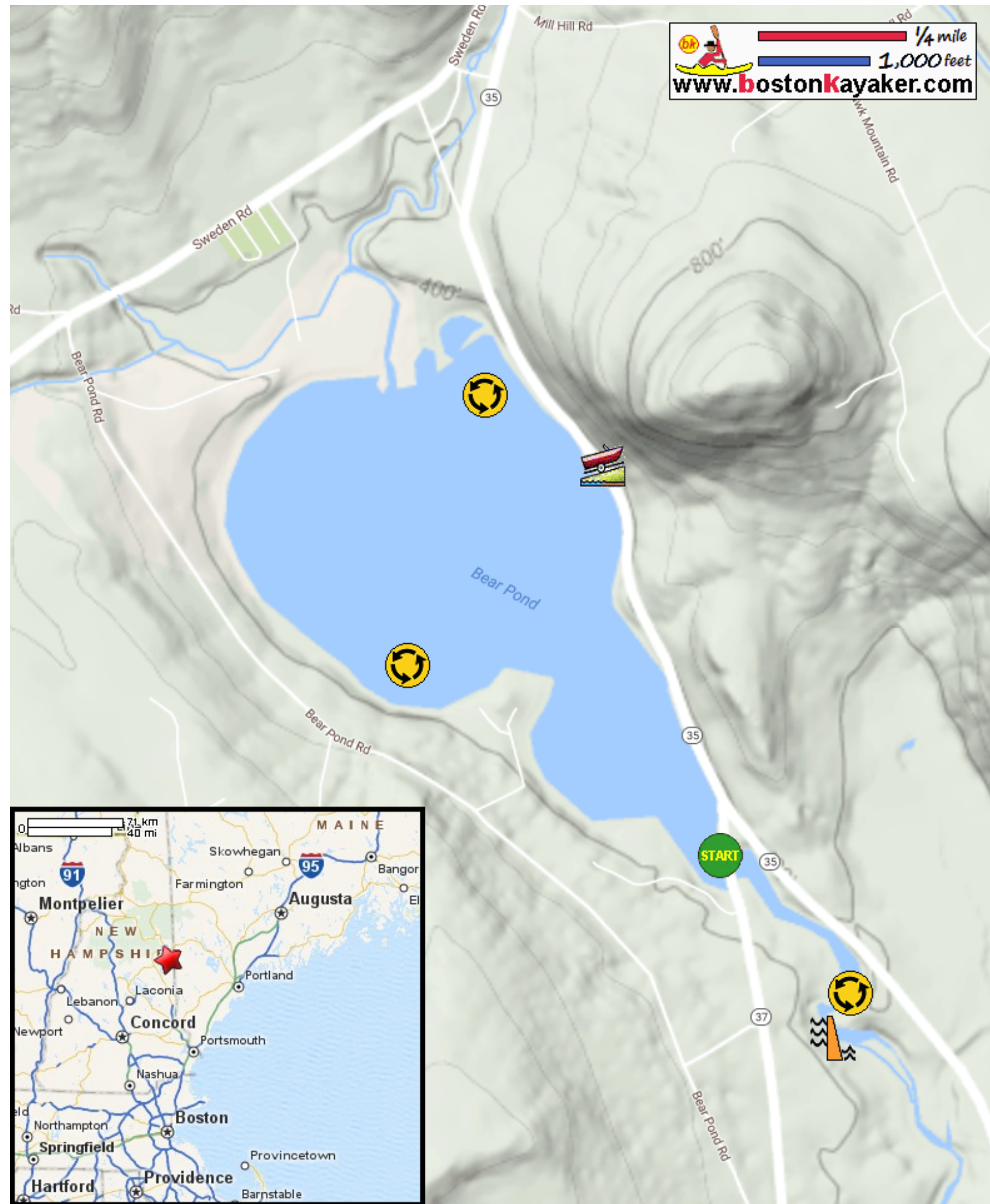


Kayaking on Bear Pond - in Waterford ME



▬ 1/4 mile
▬ 1,000 feet
www.bostonkayaker.com



-  Put in at Bear Pond Park on Route 37 in Waterford ME.
-  Paddle around Bear Pond and return.
-  Estimated round trip distance = 2.5 miles
-  Route 35 dirt ramp access
-  Bear Pond Dam