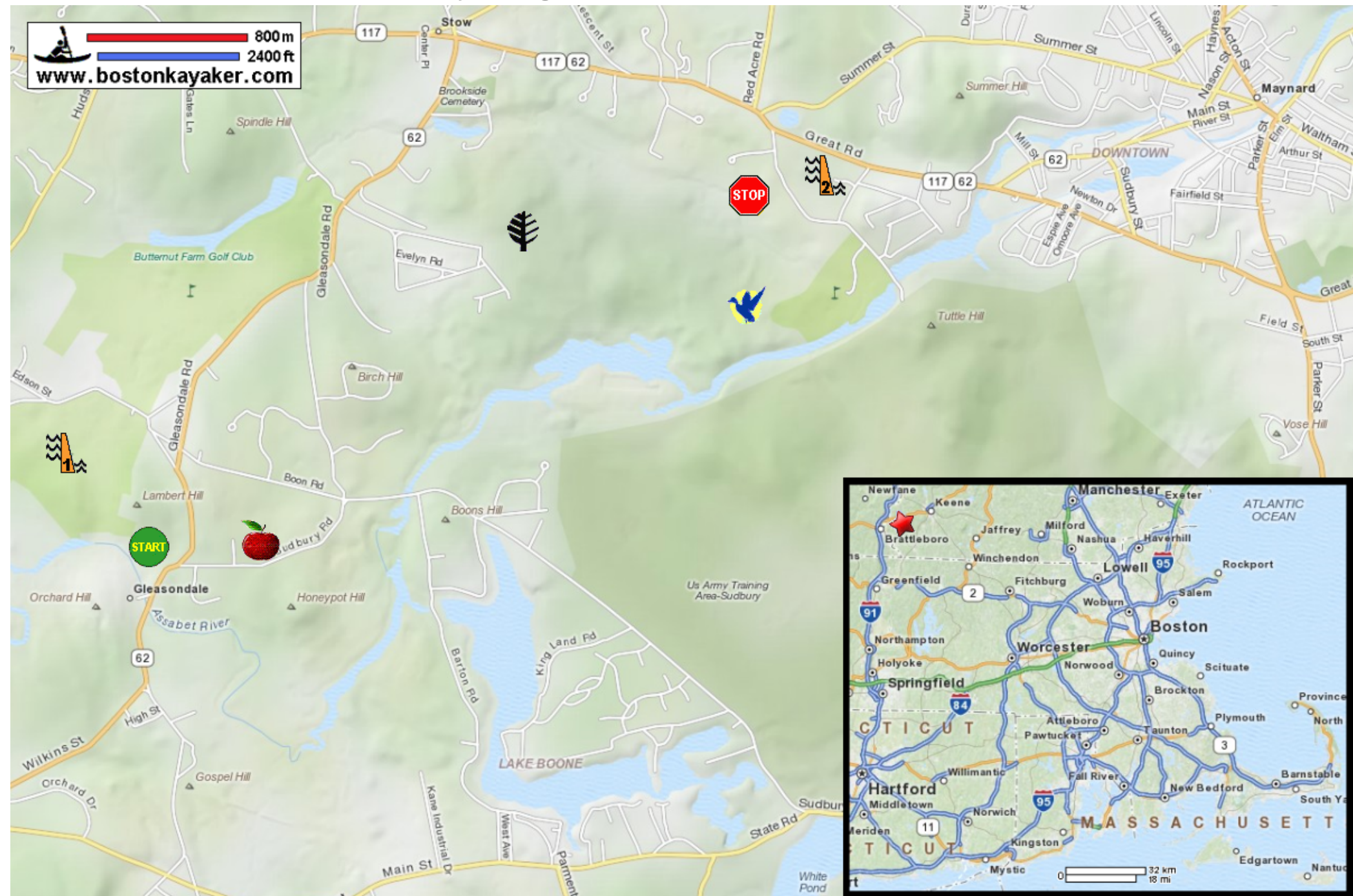



Kayaking on Assabet River - in Stow MA



 800 m
 2400 ft
www.bostonkayaker.com





START Put in at Gleasondale Road in Stow MA.


STOP Take out at White Pond Road in Stow MA.


 Estimated distance = 3.5 miles

 Gleasondale Dam. Do not cross!

 Stow Town Forest

 Honeypot Hill Orchard "Pick your own apples!"

 Assabet River National Wildlife Refuge (NWR)

 Ben Smith Dam. Do not cross!