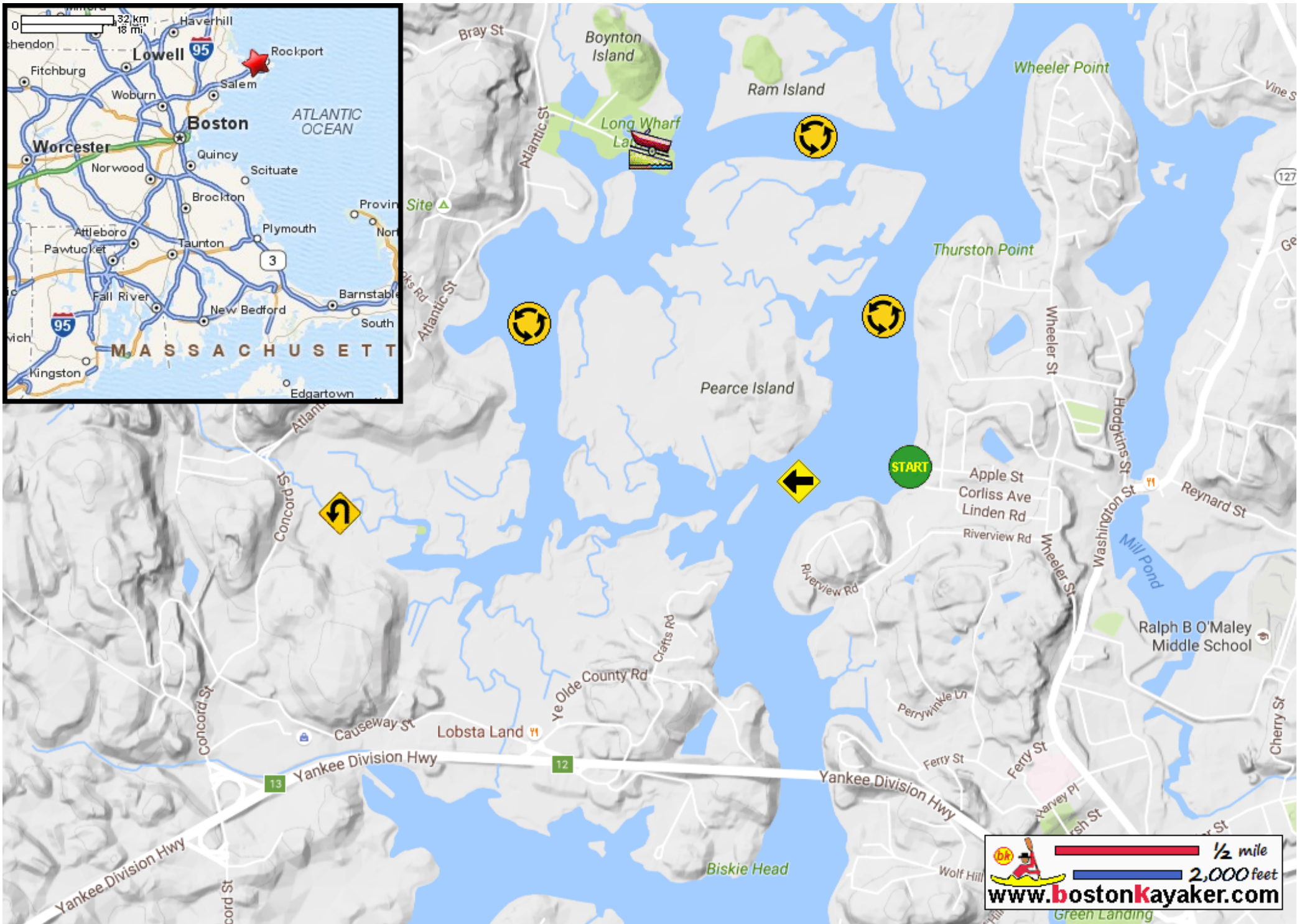


# Kayaking on Annisquam River from Corliss Landing - in Gloucester MA



Put in at Corliss Landing on Apple Street in Gloucester MA.



Paddle west to Jones River and return.



Paddle around Pearce Island and return.



Estimated round trip distance = 4+ miles



Best to start 1 hour+ before high tide.



Long Wharf Landing