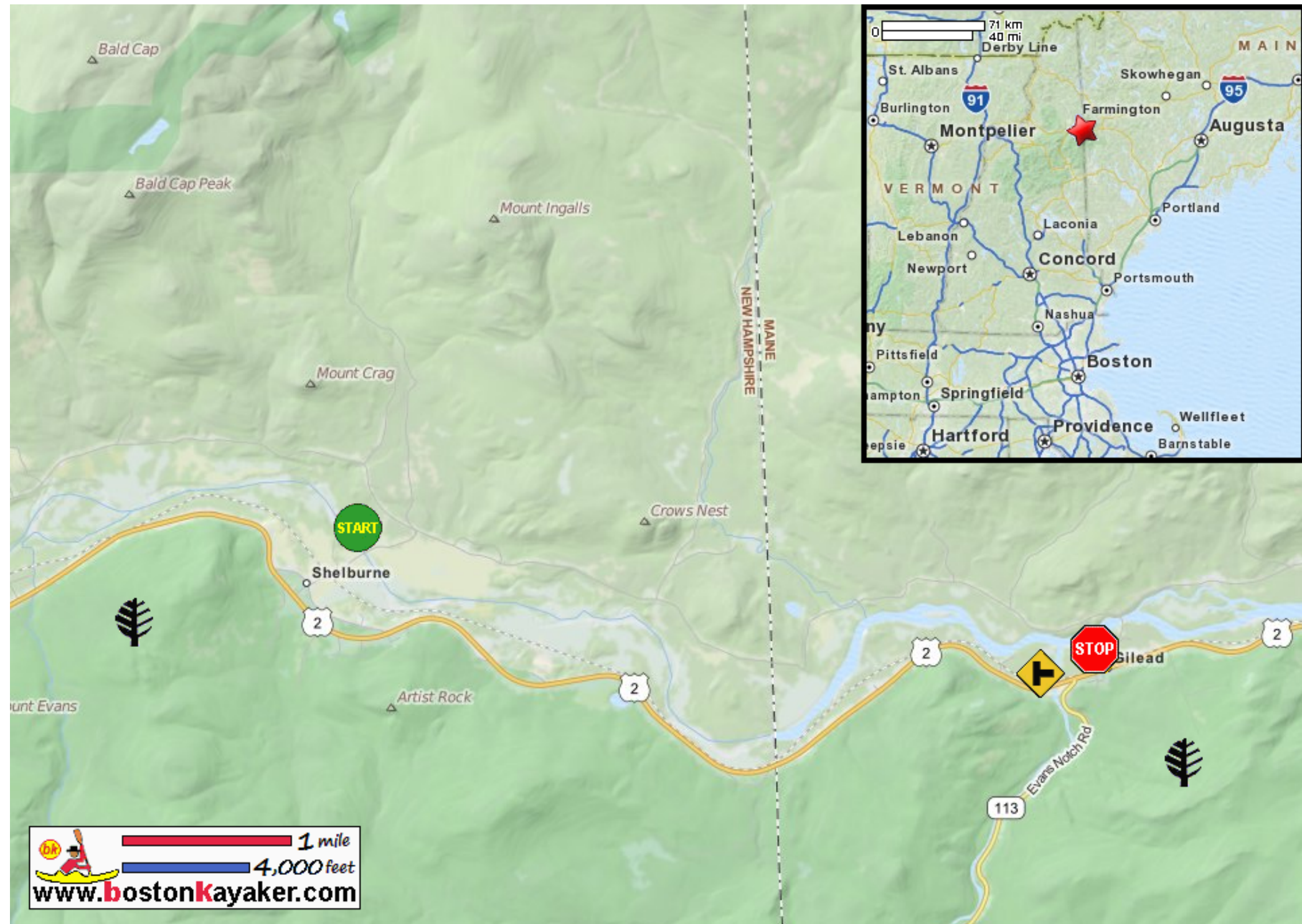







Kayaking on Androscoggin River - from Gorham NH to Bethel ME



-  Put in at Meadow Road in the village of Shelburne in Gorham NH.
-  Take out at Gilead Bridge on Bridge Street at village of Gilead in Bethel ME.
-  Estimated distance = 6.3 miles
-  White Mountains National Forest
-  Wild River enters on river right.

 **1 mile**
 **4,000 feet**
www.bostonkayaker.com