

For fishing regulation information, please refer to the NHFGD Freshwater Fishing Digest.

Contact: NHFGD Region 2 (Lakes Region), New Hampton
E-mail: reg2@wildlife.nh.gov Phone: 603-744-5470

WEBSTER LAKE Franklin

FISHERY: Warmwater **ACRES:** 606

TROPIC LEVEL: OLIGO

AVG. DEPTH: 18 **MAX. DEPTH:** 39

SPECIES: RT,BT,SMB,LMB,ECP,HP,WP

ADDITIONAL INFO:

ACCESS: ramp at Legace Beach, or Webster Lake WMA shorebank

Please contact NH Dept of Safety, Marine Patrol for info. on water body/boat/motor restrictions: (603) 293-2037 www.nhmarinepatrol.com

Public Water Access site

 Canoe/cartop

 Shorebank


 Ramp


 Bathymetric contour (feet)


Bathymetry provided by the NH Department of Environmental Services, Watershed Mgt Bureau


 Town boundary


 Primary Route


 Road or Street

 Trail or other

 Stream or Shoreline

 Surface Water

 Wetland

 Conservation or Public land

 Cleared

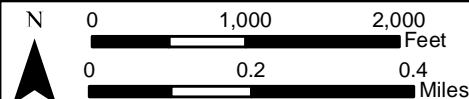
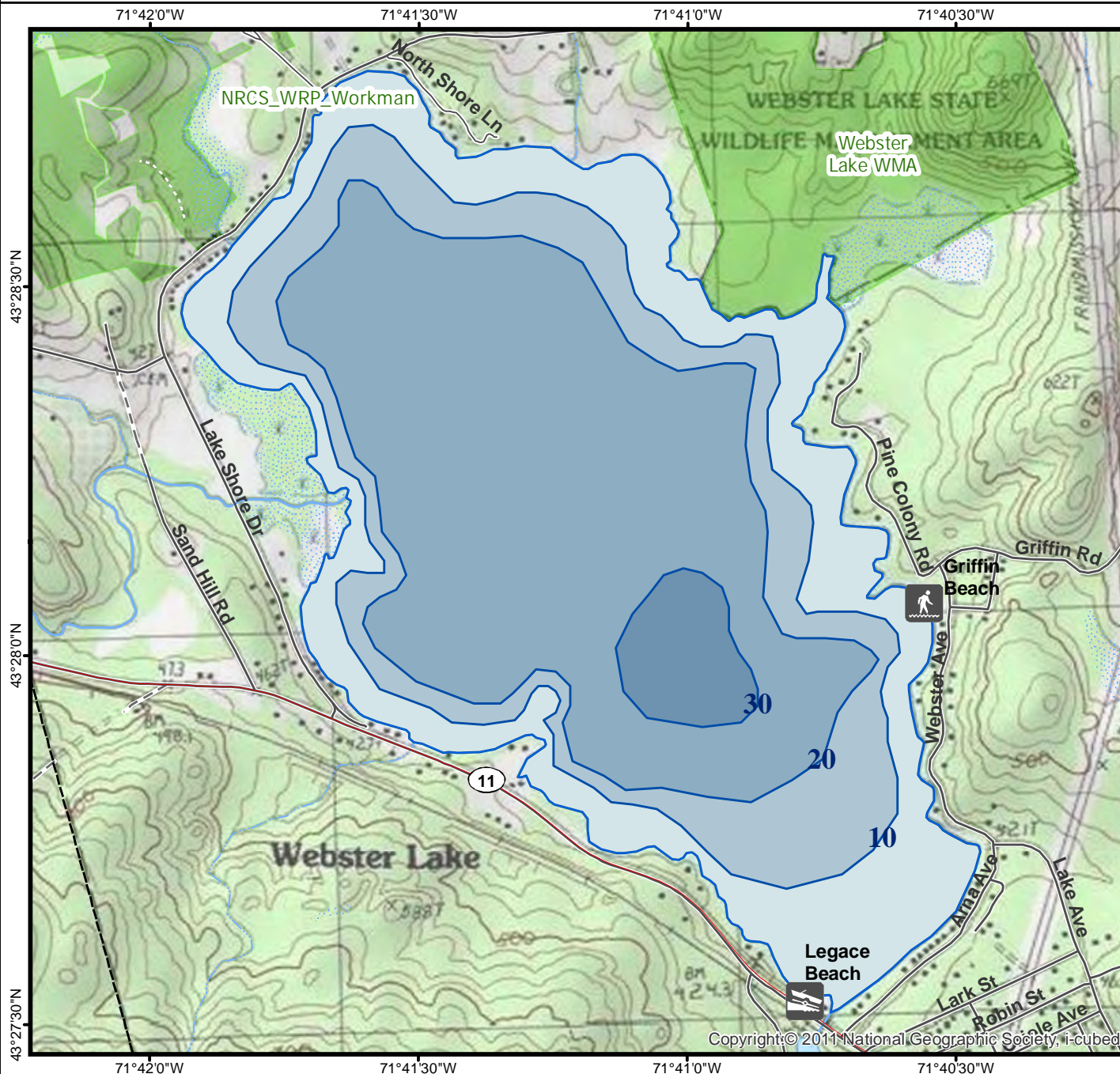
 Forest

 Contour

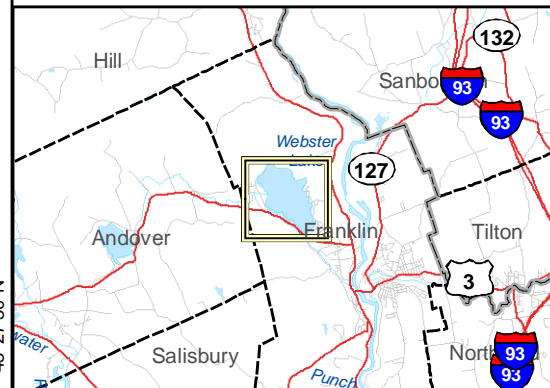
 Building

Source: USGS

 Restricted Access Conservation



Most data presented on this map represent stock data sets obtained from NH GRANIT, Complex Systems Research Center, UNH. CSRC, NHOEP, NHFGD and the cooperating agencies make no claim as to the validity or reliability or to any implied uses of these data. NOT FOR NAVIGATION.



Directions: Rt 11