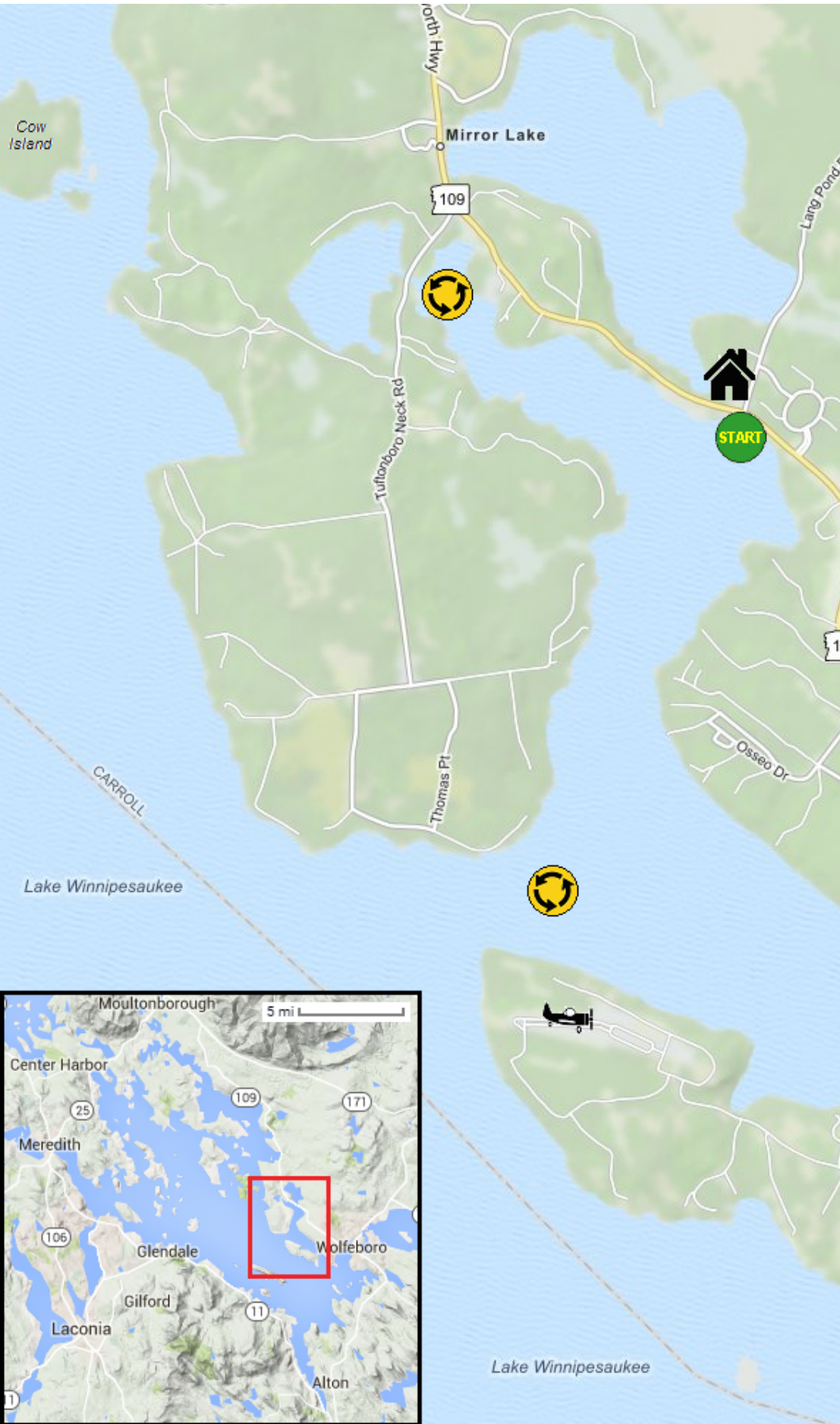








Kayaking on Lake Winnepesaukee's Winter Harbor - in Wolfeboro NH




 1/2 mile
 2,000 feet
www.bostonkayaker.com

-  Put in at Route 109 town ramp in Wolfeboro NH.
-  Paddle around Lake Winnepesaukee's Winter Harbor and return.
-  Libby Museum - a museum of natural history
-  Estimated round trip distance = 5.5+ miles
-  Carry Beach - alternate put in
-  Lakes Region Airport