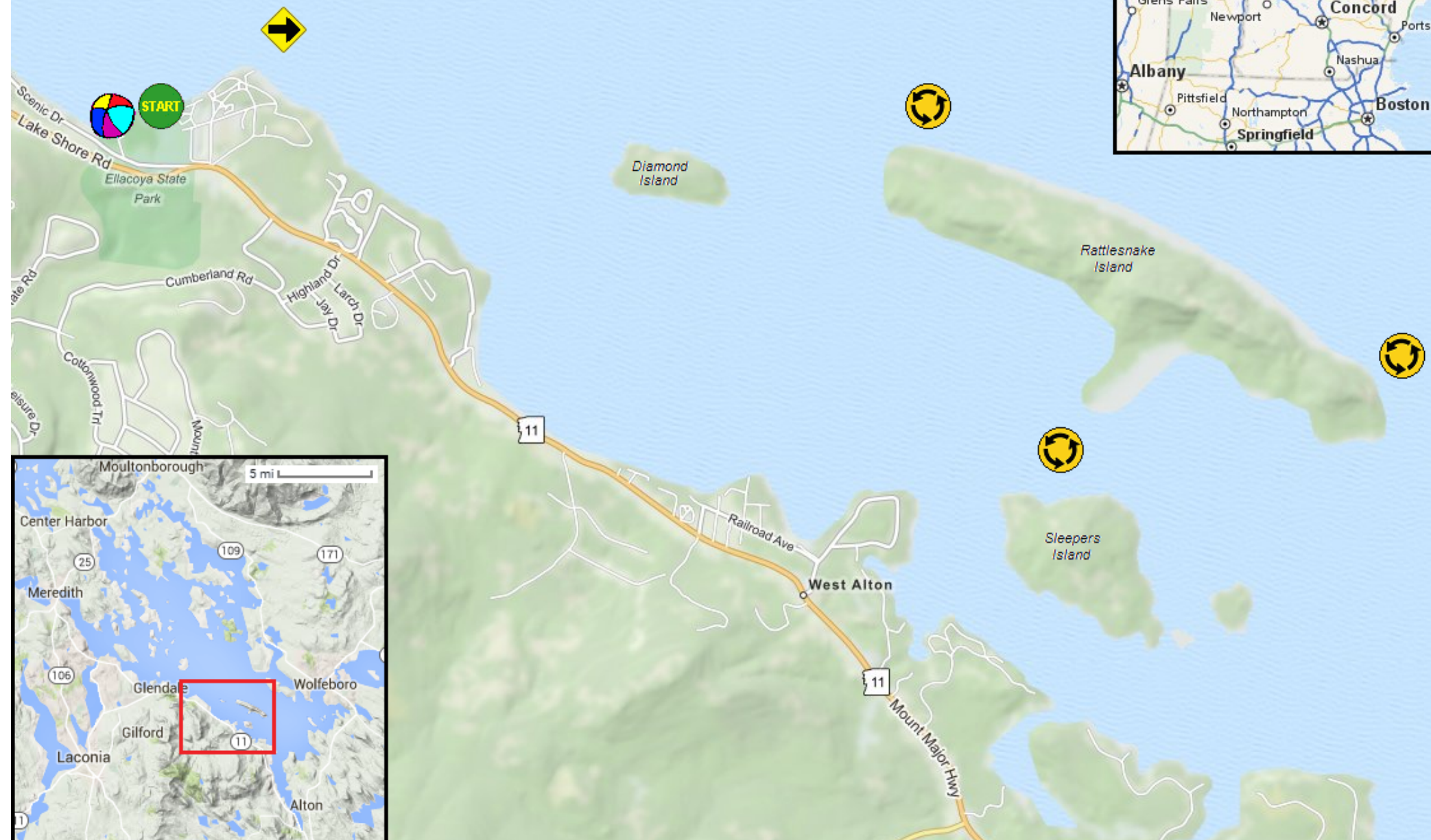
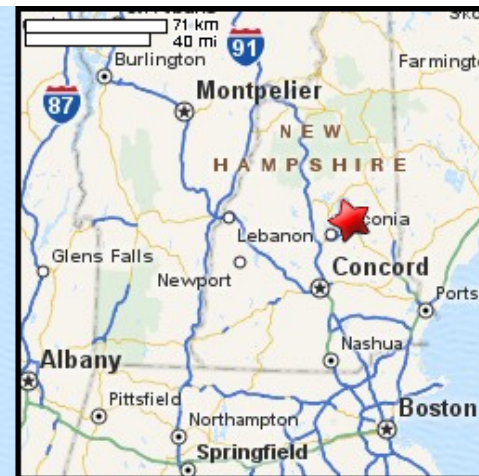


Kayaking on Lake Winnepesaukee around Rattlesnake Island - in Gilford NH

1/2 mile
2,000 feet
www.bostonkayaker.com



- Put in at Route 11 park ramp in Gilford NH.
- Paddle east around Rattlesnake Island and return.
- Estimated round trip distance = 9+ miles
- Ellacoya State Park - beach and rec area
- Islands' shores are private property.