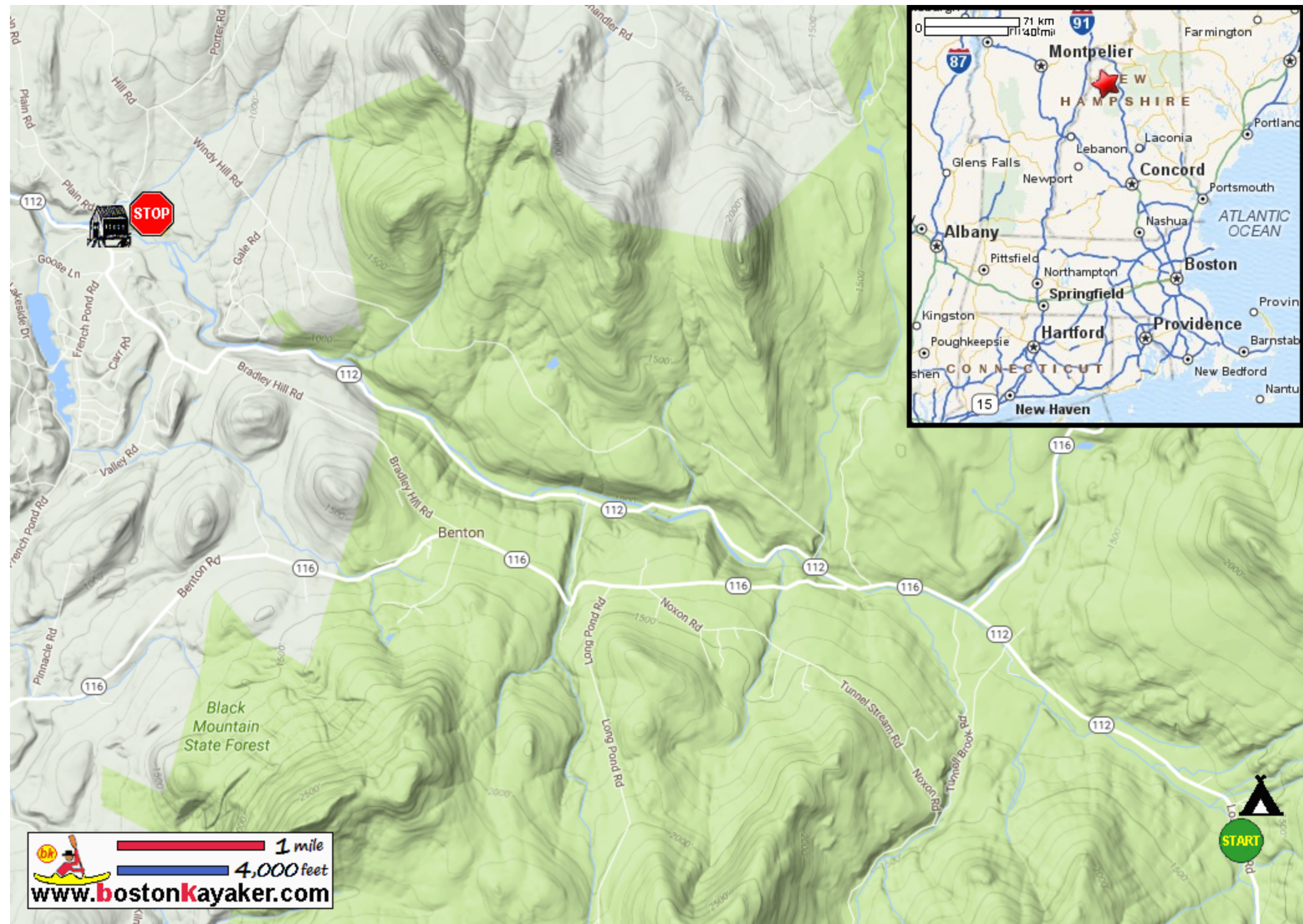


Kayaking on Wild Ammonoosuc River - from Wildwood NH to Bath NH



-  Put in at Lost River Rd in Wildwood NH.
-  Take out at Porter Road in Bath NH.
-  Estimated distance = 10 miles
-  Wildwood Campground
-  Swiftwater Bridge
-  Class II - III rapids.
-  Water may be too low from mid-summer.