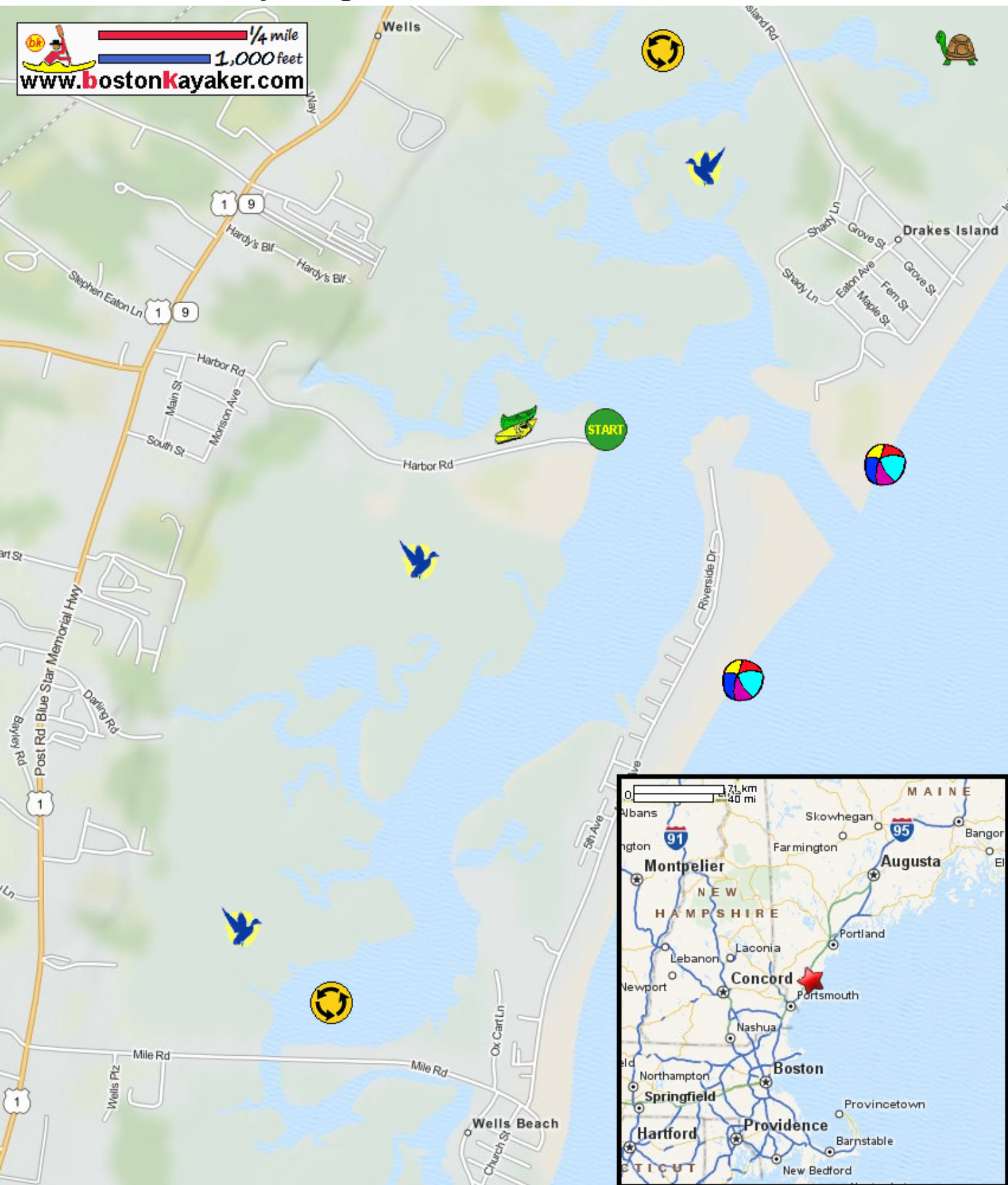



Kayaking on Webhannet River - in Wells ME

  1/4 mile
 1,000 feet
www.bostonkayaker.com



-  Put in at Harbor Road in Wells ME.
-  Paddle around river and return.
-  Estimated round trip distance = 4+ miles
-  Plan to paddle when tide is high.
-  Rachel Carson National Wildlife Refuge (NWR)
-  Webhannet River Kayak Rentals
-  Public beaches and picnic area
-  Wells Reserve at Laudholm Farm