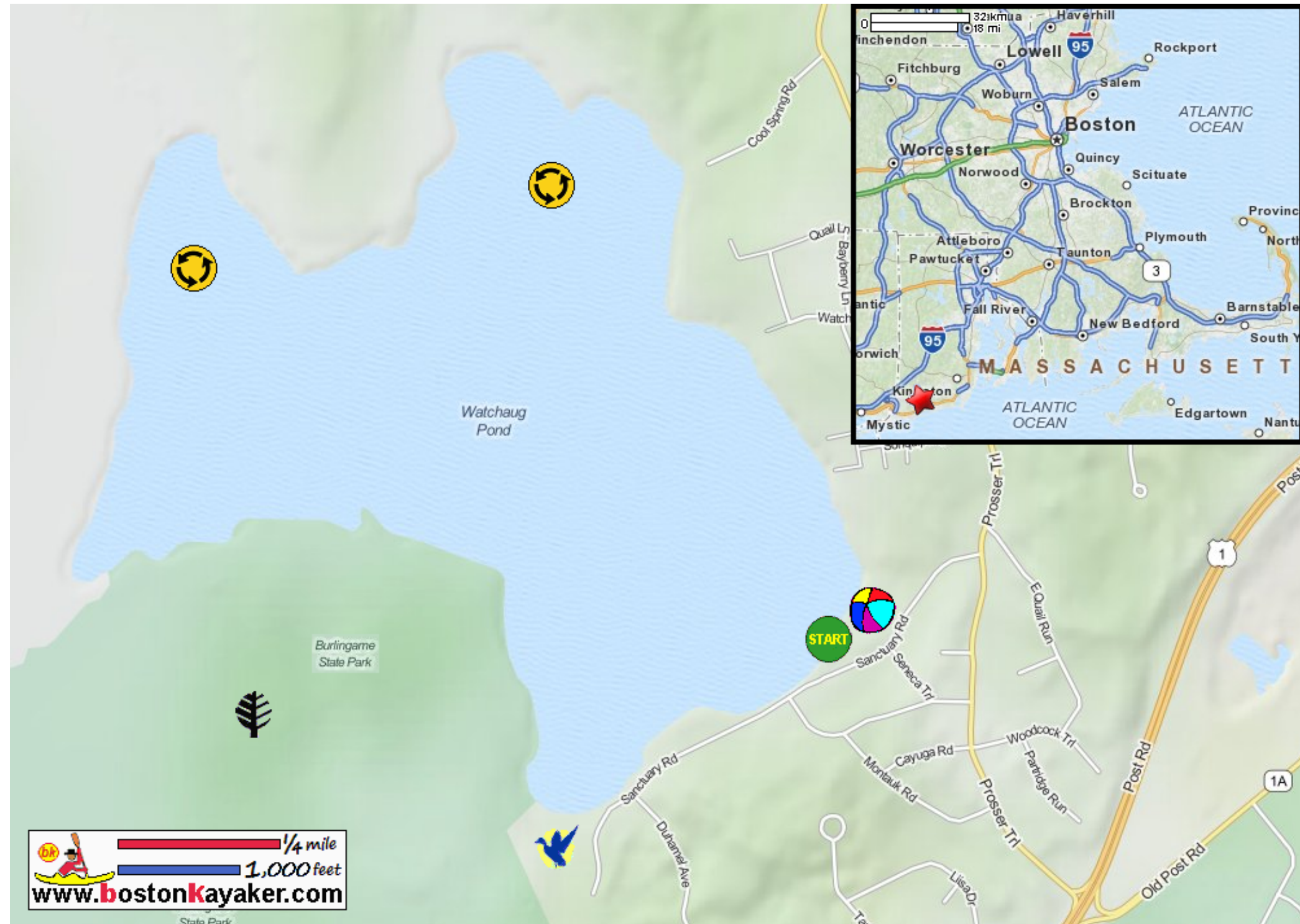


Kayaking on Watchaug Pond - in Charlestown RI



www.bostonkayaker.com

- Put in at Sanctuary Road in Charlestown RI.
- Paddle around Watchaug Pond and return.
- Estimated round trip distance = 4+ miles
- Burlingame State Park
- Kimball Wildlife Sanctuary
- Beach and picnic area with a covered pavillion and bbq pits