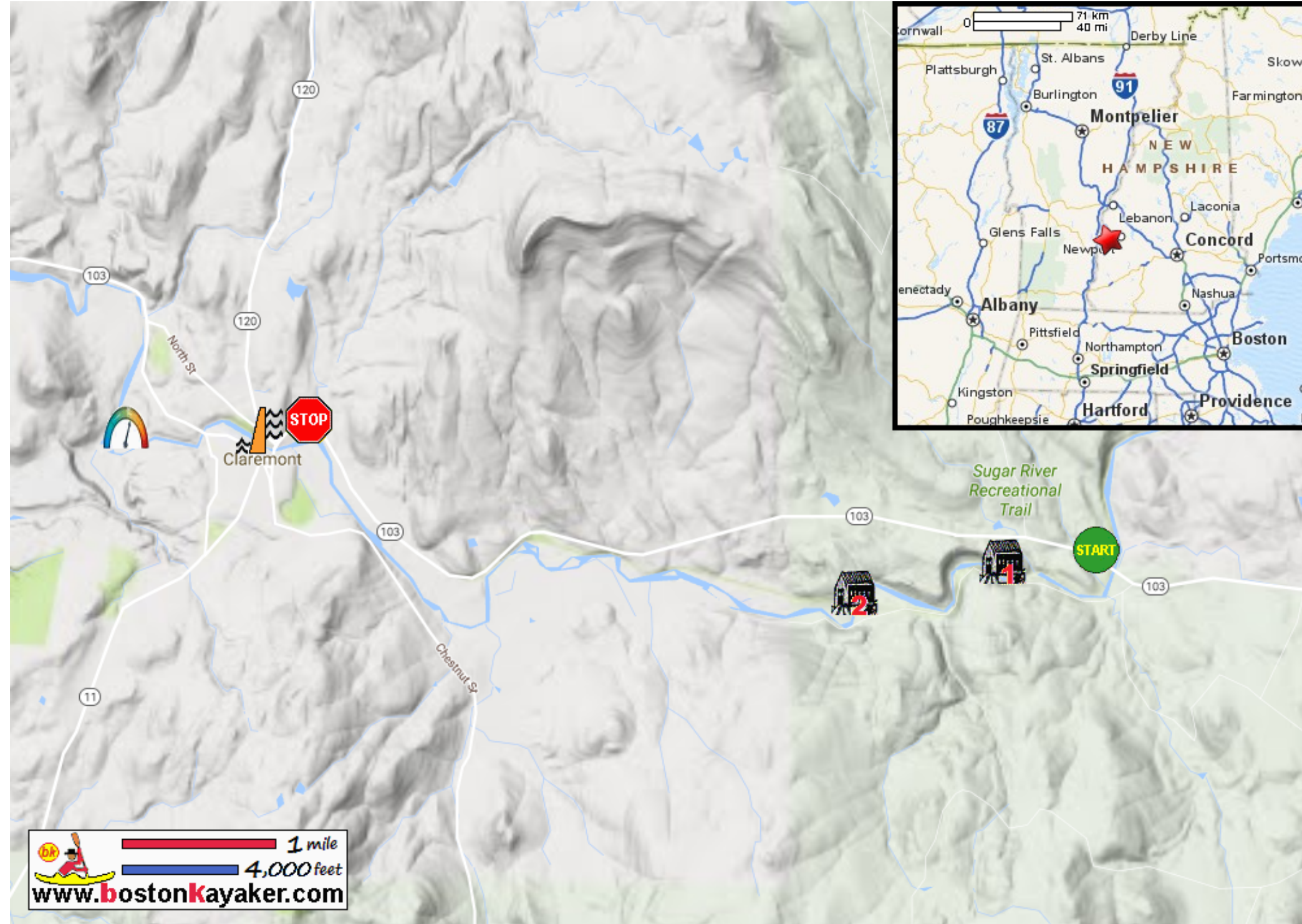
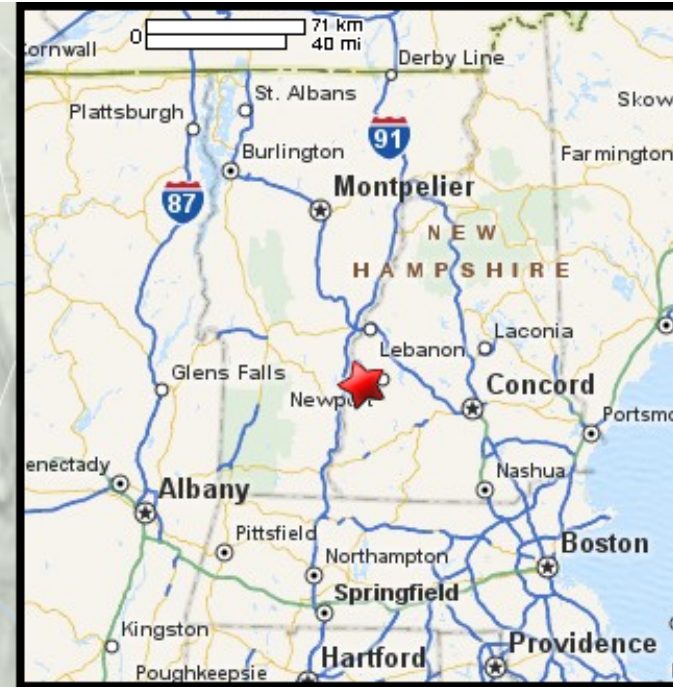









Kayaking on Sugar River - from Newport NH to Claremont NH




 1 mile
 4,000 feet
www.bostonkayaker.com

-  Put in at Route 103 in Newport NH.
-  Take out at Riverside Park on Washington St. in Claremont NH.
-  Estimated distance = 7+ miles
-  Pier Bridge
-  Wright's Bridge
-  Claremont Dam
-  Best when gauge height 3 feet+.