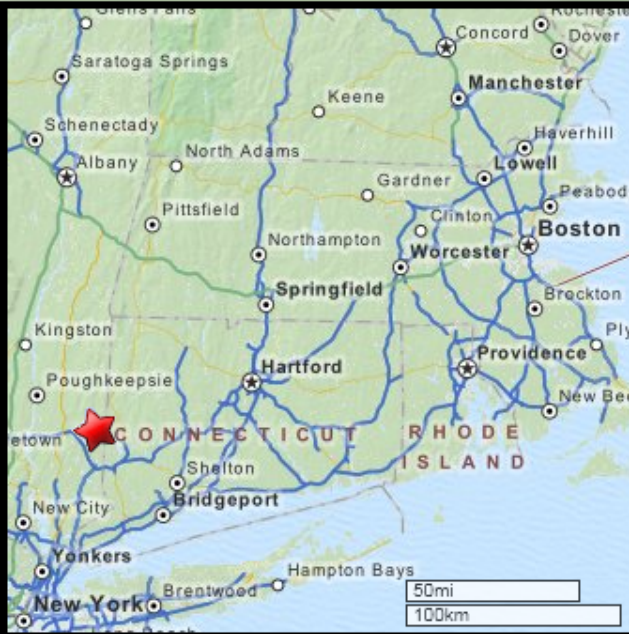
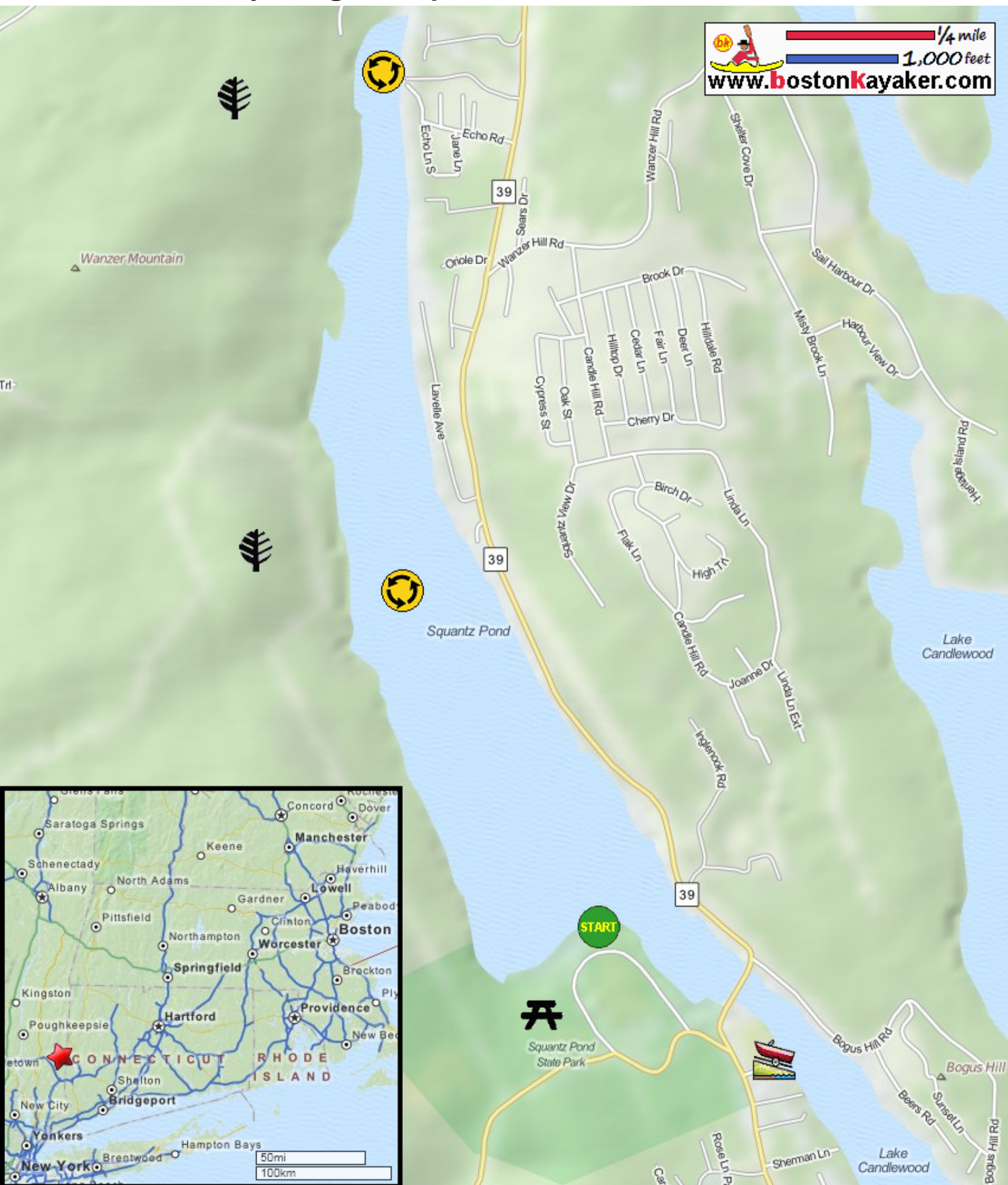








# Kayaking on Squantz Pond - in New Fairfield CT

www.bostonkayaker.com

1/4 mile  
1,000 feet



-  Put in at state park beach on Short Woods Road in New Fairfield CT.
-  Paddle around Squantz Pond and return.
-  Estimated round trip distance = 5 miles
-  Pootatuck State Forest
-  Lake Candlewood boat ramp
-  Squantz Pond State Park