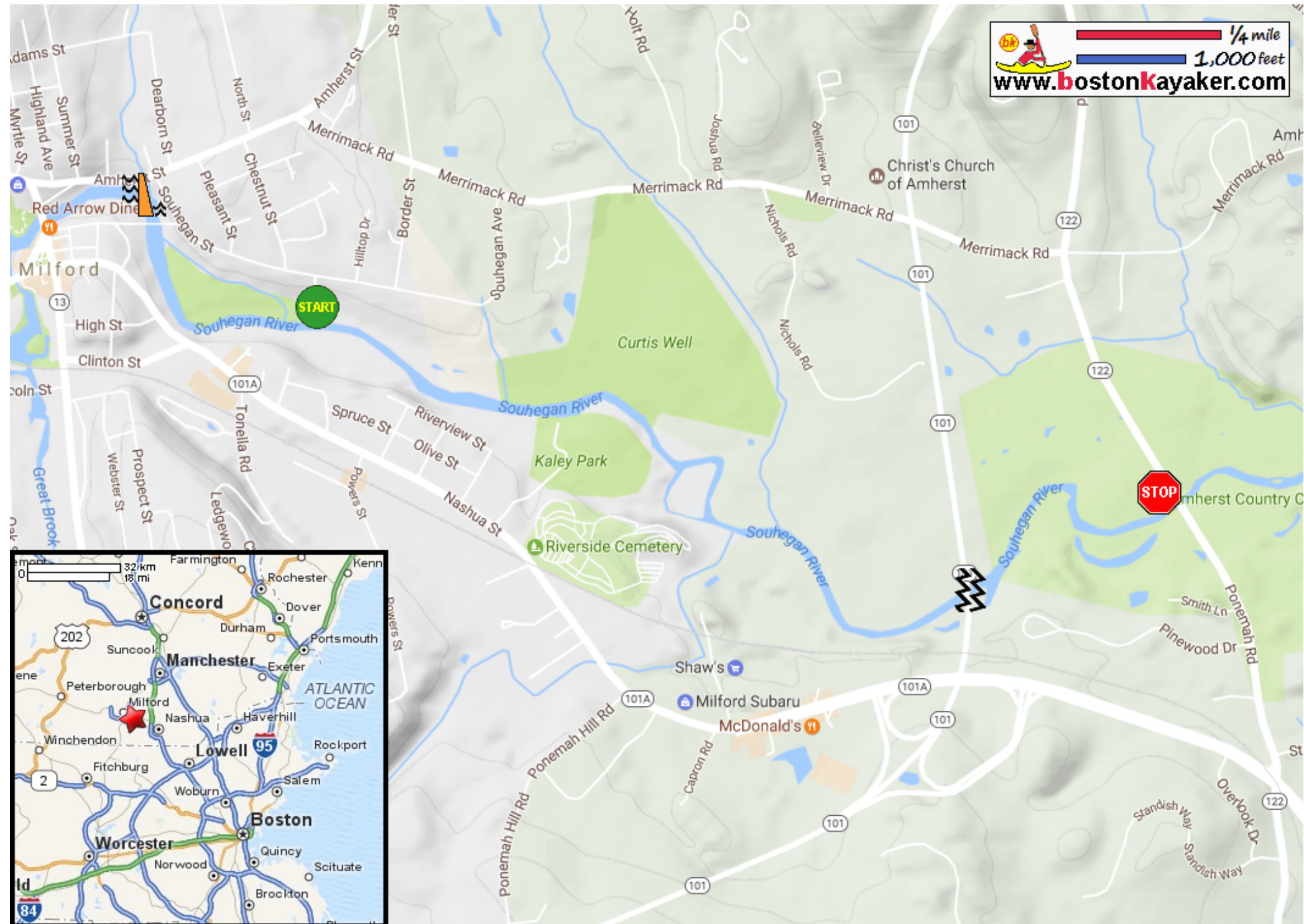




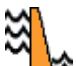



# Kayaking on Souhegan River - from Milford NH to Amherst NH

www.bostonkayaker.com

1/4 mile  
1,000 feet



-  Put in at Souhegan Road in Milford NH.
-  Take out at Route 122 in Amherst NH.
-  Estimated distance = 2.5 miles
-  Class II rapids under Route 101 run on right
-  Milford Town Dam
-  Proceed if there is enough water at the put in.