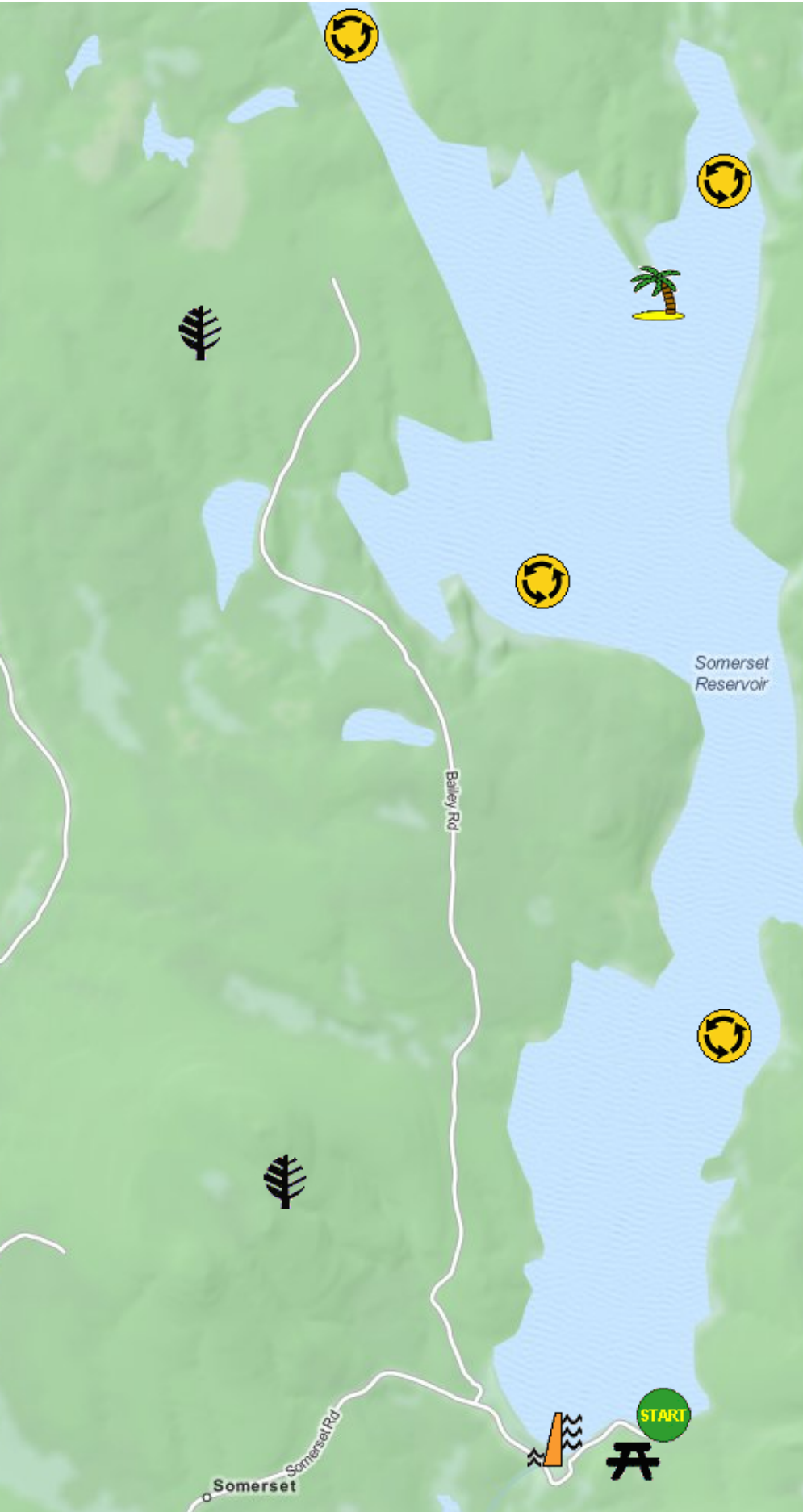










# Kayaking on Somerset Reservoir - in Somerset VT




 1/2 mile  
 2,000 feet  
[www.bostonkayaker.com](http://www.bostonkayaker.com)

-  Put in at Somerset Road in Somerset VT.
-  Paddle around Somerset Reservoir and return.
-  Estimated round trip distance = 10 to 12 miles
-  Picnic and parking area
-  Somerset Reservoir Dam
-  Green Mountain National Forest
-  Streeter Island - has picnic area
-  Coastline is pristine and undeveloped.